

# The ATLATL

**"Too long have I hunted mammoth alone!"**

Rich McWhorter

July 2000

THE NEWSLETTER OF THE WORLD ATLATL ASSOCIATION, INC.  
1390 South Paris Court, Aurora, Colorado 80012, USA  
BILL TATE, EDITOR

Vol. 13 No 3

## Charlie Brown given Fellowship Award

by Bill Tate

As his first official act, incoming President Jim Ray presented outgoing President Charlie Brown with the organization's highest honor, making him the fifth person to become a Fellow in The World Atlatl Association.



President Jim Ray presenting Fellowship Award to Charlie Brown.

Congratulations Charlie. This is a well deserved honor. The plaque reads:

The World Atlatl Association, Inc., in recognition of valuable service and innovative leadership during a period of exceptional growth of the World Atlatl Association, and for the vision and wisdom he has displayed, always demonstrating the foresight to act appropriately for the good of the sport and the organization, by this proclamation acknowledges CHARLIE BROWN as a Fellow of

the World Atlatl Association, Inc., and grants him all of the entitlements and rights of this organization.

## The Presidents Award goes to Hallie Cash

The plaque reads: Although not a thrower, Hallie's impact on the World Atlatl Association has



Outgoing President Charlie Brown bestows the President's Award for 2000 upon a surprised Hallie Cash.

been enormous. A self-proclaimed "chauffeur" for Leni Clubb and "gofer" for the organization, Hallie is always there at the contests to help set up, sign in, check scores and most importantly, provide safety awareness. As safety officer (with bullhorn in hand) Hallie has averted potentially dangerous situations on many occasions. As the number of contests and participants grow, we all need to study Hallie and her implementation of our safety rules...then we need to practice what Hallie teaches us. Atlatling in a safe environment is a must for our

organization to exist. I've personally observed Hallie at many tournaments over the years and she has become one of my heros. Thanks Hallie from all of us, and we love you.

*Ed. Comment: This is a well deserved tribute to a wonderful woman.*

Check out this web page:

[www.primitiveweapons.com](http://www.primitiveweapons.com)

Bob Booth has been in the primitive weapons business for years and has a surprisingly large selection, from atlatls to blowguns and beyond. You can also reach him through his e-mail address: [primweap@ciusa.net](mailto:primweap@ciusa.net)

Bob says that if you mention that you are a member of WAA he will grant a 10% discount and is offering a free membership in WAA to anyone buying \$150.00 in merchandise. Sounds like a good deal.

#### Fremont Indian State Park

#### 6<sup>th</sup> Annual Atlatl Contest - June 17-18 2000

by Leni Clubb

Under the watchful eyes of two soaring eagles, thirty-plus hardy throwers braved one of the toughest target courses in the West -- Fremont Indian State Park on Saturday, June 17<sup>th</sup>. It was a beautiful sunny day, a little breezy, but perfect for the contest. In all, counting the Under Ten and Youth categories, 41 persons participated. The winners were:

#### Under Ten

1 <sup>st</sup>	Tiffany Weimer	Monroe, UT
2 <sup>nd</sup>	Sierra Waters	Monroe, UT
3 <sup>rd</sup>	Marie Tuft	Monroe, UT

#### Youth

1 <sup>st</sup>	Dalan Simmons	Page, AZ
2 <sup>nd</sup>	Jeffers Nilsson	Utah
3 <sup>rd</sup>	Tanner Weimer	Monroe, UT

#### Women

1 <sup>st</sup>	Judy Pritchard	Boise, ID
2 <sup>nd</sup>	Susie Brown	Arvada, CO
3 <sup>rd</sup>	Trena Pickavit	Lola, UT

#### Men

1 <sup>st</sup>	Charlie Brown	Arvada, CO
2 <sup>nd</sup>	Jeff McGill	Roy, UT
3 <sup>rd</sup>	Ray Madden	Joplin, MO

Charlie Brown took home the Grand Champion Award.

International Standard Accuracy Contests were held on Saturday afternoon and again Sunday morning but we won't even mention the scores as gusty winds played havoc with the darts. Anyway, a great time was had by all and we look forward to returning next year. We just hope that Pete doesn't add another

"killer" target to the already challenging round...or maybe we do...as it gets more exciting each year. Pete Weimer, Assistant Park Manager provided us with a well organized event topped off with a delicious Dutch Oven Dinner Saturday evening.

#### Candor Spring Atlatl Contest

by Bob Berg

The rain held long enough for a group of dedicated and competitive atlatlists to participate in the May 13-14 Candor, NY Spring Atlatl Contest and ISAC. Fortunately, we were treated to a cloudy, warm day with slight to moderate breezes - one of the few dry weekends this May. It was a great week of comradery and atlatl fun with a chicken barbeque lunch prepared as a fund raiser by Boy Scout Troop 38 of Owego, NY, (Peter Berg's troop).

First place in the local contest went to Denny Bard of Fort Loudon, PA. He faced tough competition from Terry Keefer also of Fort Loudon, Chris Pappas of Hancock, NY and Scott Van Arsdale of Owego, NY, but managed to hold them off and win the first place title.

Top scorers in Saturday's ISAC were Brandon Anderson 81, Terry Keefer and Denny Bard both 80, Chris Pappas 79X, Bob Berg 78X, Scott Van Arsdale 77 and Dennis Lantz with 76X. Thirteen year old Tommy Goble had 64, Scott Mincer-age-12 had 44, and Casey Goble-age-11 had 22. Missy Dildine threw 61. On Sunday Bob Berg 85, Scott Van Arsdale 84, Denny Bard 83, Terry Keefer 78, Jack Rowe 75, Chris Pappas 71 and Missy Dildine 64.

\*\*\*\*\*

#### Valley of Fire - 2001

by Leni Clubb

Many of you will be happy to learn that in April 2001, the Tenth Annual Atlatl contest will be held in beautiful Valley of Fire State Park, near Overton, Nevada. As soon as all of the details are worked out, there will be an announcement as to dates - probably in the October newsletter - so that you can make arrangements to attend. A pre-registration form will be inserted in the January *The Atlatl*. The contest will be held at the foot of famous Atlatl Rock with its many petroglyphs of atlatls. The group camping area has been reserved for WAA members. You will really enjoy this annual event...just ask any one who has been there!!

**I have Kleptomania, but when it gets bad,  
I take something for it.**

## Atlatl and Dart Tips for the New Season

By Ray Striscek

It is the time of the year to fire up your passion for punching your atlatl skills envelope. You must do better this year. The fate of the universe is at stake. Well, not really, but think of the dent in your own pride bubble that a lackluster performance will induce. Imagine what certain people standing off in the shadows will whisper about you to those other people, if you don't do better this year than last year. Kind of scary, isn't it? Well, worry not. What follows are a few tips to help you improve upon your performance of last year. I absolutely guarantee that if you adhere to this advice, you will not fail to improve your skill level, unless you are already scoring 85 or better in the World Atlatl Association's International Standard Accuracy Competition, in which case, you are on your own. I mean, why would I want to help you 85 or better people beat me? So if you have already scored 85 or better in the ISAC, don't read any further - this is for the people I want to see beat you.

**STEP ONE, CHECK THE DART:** If it is wooden and is the one you used last year, make a new one. If it is made of cane, check to see if it has become brittle, less flexible, or shows signs of splitting. If so, make a new one. A good dart has a balance point 8 to 10 inches forward of center with the weight in the front half being evenly distributed along the front half and not piled into the point end.

Some tricks to shifting the balance point forward on your dart:

**Wooden Dart:** Shave/shape/taper the rear half down. Remember, not only does a good dart have a forward of center balance point, but the front half should be less flexible than the rear half.

**Cane dart:** It should, by nature of its "cane-ness", already have a forward of center balance point and a stiffer front end. If the balance point needs to be shifted more forward, switch from using a foreshaft of pine to one of oak, hickory or maple (all heavier than pine), and use a longer foreshaft, tapered and thinned at the rear end so that it may be inserted deeper into the main shaft. Or, about 10 inches back from the front end of the main shaft, wrap 3-ply string around the shaft for a distance of 6 to 9 inches toward the rear and apply two coats of wood worker's glue. This little bit of extra weight should move the balance point forward about 2 inches.

**Aluminum dart:** Put a dowel rod inside. The rod should take up 3/5 of the dart's length from the front end. Glue it in there, or wrap bits of

duct tape over 6 inches or so along the dowel rod so that it does not rattle around inside. (Very annoying.)

**A General Rule of Thumb About Darts:** The more forward of center the balance point is, the quicker the point end will drop during the flight to the target. Anything more than 12 inches forward of center will cause the point end to drop awfully fast. The cure to quick drop is to move the balance point back toward the center of the dart or to use less fletching, which will cause problems in flight stability.

**Fletching:** Make fletching 6 to 9 inches long by 1 to 1 1/4 inches wide. The general rule about fletching is that big fluffy fletching is good for flight stability, but it also increases rear end drag slowing the dart down.

**STEP TWO, CHECK THAT ATLATL:** Although the archaeological record has atlatls 6 inches to 4 feet long, most modern ISAC-type atlatlists use atlatls from 22 to 28 inches in length with 23 to 25 inches being the average range of choice. Should you use a rigid or flexible atlatl? Should you use an atlatl weight? That is for you to decide. More important is having a good grip, a grip that you control, and a grip that does not let the atlatl handle slop around in your hand. The only means of control is the handle. During the casting motion, there is a flexing dart only nominally connected to your atlatl spur, and it is located far away from your gripping hand. The longer the atlatl, the farther away that nominal connection is from your gripping hand.

**Dart rest or no dart rest?** The purpose of a dart rest is to free up one or more fingers from the task of holding the dart to the atlatl prior to the casting motion so that more grip control of the atlatl handle can be achieved. If you use a one finger dart rest, do not drape the finger over the dart, but very lightly hold the dart to the rest from an angle with the very tip of your finger. If you use a V-shaped dart rest, put leather strips inside the "V" to prevent the dart from sliding forward and off the spur. You do not have to use any fingers to hold the dart to the atlatl prior to the casting motion. If you are not going to use a dart rest, be sure that you let go of the dart after you start the casting motion. The key to not using a dart rest is to use nearly zero finger and thumb pressure in holding the dart, and as soon as humanly possible, release all holding pressure as soon as you feel the front end of the dart rising at the very beginning of the casting motion.

**STEP THREE, SOME CASTING TECHNIQUE ADVICE:**

There are three ways to really insure that your dart hits the dirt in front of the target: bend forward while you cast, drop your elbow while you cast, or

forget to flick your wrist at the end of the cast. Bending forward makes the point end of the dart drop down before you reach that moment when the dart is supposed to separate from the atlatl. A dart pointed at the ground in front of the target will always hit the ground in front of the target no matter how hard you throw. Dropping the elbow makes the point end of the dart drop down before you reach that moment when the dart is supposed to separate from the atlatl; therefore, as stated above, the dart is pointed at the ground in front of the target when you release and that's where it is going to go. Forgetting to flick the wrist at the end of the casting motion will cause the dart to fall early. That little flick of the wrist at the end of the casting motion makes up about 50 percent of your torque.

Force yourself to stand up straight and tall, put your left foot forward a half step (right foot, if you throw left handed), and hold the atlatl and dart just above and behind your ear. Rock back on your other foot just a little and then take a half step forward with your left foot, dragging the toes of your right foot behind while you cast. It does not require full-tilt force of throw to get the dart to the target at 15 or 20 meters. Use this form every time and practice at least twice a week to gain consistency of technique and force. You will soon be able to make minute adjustments, necessary to control elevation and direction, and your score will improve.

The casting motion, Pull, Push and Flip: Remember, the dart is just along for the ride. Pull the atlatl forward building momentum, push and lever the atlatl up and forward building more momentum, and then flip, but don't drop your elbow and don't bend over. While you pull the atlatl and dart forward, watch the point of the dart start forward. Make sure it is headed toward the top center of the target. While you push and lever the atlatl up and forward, watch the point of the dart move forward. Make sure it is headed toward the top center of the target. When you get to the flip part, where you flick your wrist, make sure the point of the dart is still headed toward the top center of the target. This is the only time you have for any directional control. At the end of the cast, your arm should be straight out toward the target. You should be standing up straight and tall. There should be a drag-line in the dust behind you where the toe of your foot dragged behind you.

Stand up straight and tall. Don't bend over. Don't drop your elbow. Watch the point of the dart during the casting motion. Flick the wrist.

How hard should you throw? For 15 and 20 meters -- about 3/4 speed. If you stand straight and tall, don't bend over, don't drop your elbow and remember

to flick the wrist at the end of the cast, the dart should have enough speed to get to the target at these distances with 3/4 force of throw. ( Oh, did I mention that with very flexible darts, full force of throw will over flex them causing a miss? No? Oh..)

Get your technique down first. Don't worry about hitting the target. Worry about putting consistency into your technique. Worry about putting consistency into your force of throw. Once you have your darts going the same distance and in the same direction every time, then it will be much easier to make those very minute adjustments in elevation and direction.

Elevation: Start of the casting motion, with the atlatl handle just above and behind your ear. As you begin your cast, elevation refers to how high above horizontal the point end of the dart is angled. As you end your casting motion, and the dart separates from the atlatl, elevation refers to how high above the top center of the target the whole dart appears to be floating. Once you have developed consistency in technique and force of throw, it becomes easier to make the minute adjustments to develop consistent elevation. The angle of elevation should be greater at 20 meters than it is at 15 meters.

Direction: As you begin, and during the entire casting motion, up to and including the moment when the dart separates from the atlatl, your attention should be focused on directing the point of the dart toward the top center of the target. The target should be in your peripheral vision as you cast, while the point of the dart should be in your direct line of focused sight. When you reach the point where the dart separates from the atlatl spur, shift your direct focus from the point of the dart to the target. You may find it helpful to pass the dart directly over what seems to be the center of your head during the casting motion. Avoid sidearm throwing. The atlatl should be pulled straight forward, then pushed and levered straight ahead and flipped straight forward. No diagonal. No sidearm. The slightest bit of sidearm will cause the dart to curve toward the opposite direction of the diagonal of the sidearm.. Unless you want to cast a dart like some people bowl, and can anticipate the amount of curve over varying distances you would be well advised to stick to a straight forward overhand casting motion. No sidearm. None. Not even just a little bit.

So, get a well balanced dart, use an atlatl about 24 inches long which has a handle designed to meet your needs of control and with a spur that will not hook, split, snag , or whack your dart (Reported on in January 1999, *Atlatl Spurs* by Ray Strischek) at the moment it separates from the atlatl. Develop a straight

up and down posture, step off with your left foot, dragging your right foot behind you. Don't bend over, don't drop your elbow, and do flick your wrist. Use consistent form and force of throw.

---

### Atlatl Contest, Wrightwood, CA

By Leni Clubb

Some of our southern California throwers missed a really great contest on June 3 and 4., when the second annual atlatl contest was held at Indian Springs Ranch in connection with the annual Flintknappers Rendezvous and Primitive Bow Event. The atlatl contest was organized by Tom Mills, WAA member and primitive archer from Pasadena. The setting was along a beautiful pond surrounded by mountains covered in blooming yucca. The camping was great in grassy areas shaded by big trees, with good rest rooms and shower facilities. Primitive bow people seem to take naturally to the sport of throwing with the atlatl and enthusiasm ran high both days, with 14 throwers on Saturday and 20 on Sunday. Highest scorer in the ISAC was Tom Mills with an 81, his personal best. Would you believe that on my first throw of the day on Saturday, I hit the "X" almost dead center! First time ever! Tom hopes to make this an annual affair at Indian Springs Ranch and is optimistic that one day a Southern California Atlatl Association can be organized. If you are interested, contact Tom at [PaleoAleo@aol.com](mailto:PaleoAleo@aol.com)

---

### Earthday Gathering, Waverly, NY

by Jack Rowe

A gathering of atlatlists battled the wind and rain Friday, April 21<sup>st</sup> and Saturday the 22<sup>nd</sup> (Earthday), along the swollen Cayuta Creek near Waverly, New York. Flood warnings did not dampen anyone's spirit for two days of ISAC and the Mastodon Open, the Tyoga Atlatl Association's local contest. It consists of three targets set at 15, 17 ½ and 20 meters, kind of like a triangle. Three darts were thrown five times for a total of 15 shots. One shooting line located 15 meters from the closest target was used. Individuals picked which target or targets to shoot at. Terry Keefer won the "rotating" trophy atlatl with a score of 105. He was followed by last year's winner, Gary Fogelman with 103 and Brandon Anderson's 90. Sharon Keefer took first place in the woman's division with a 49, and Bob Rowe was the top youth with 81.

Top ISAC scores on Friday were: Terry Keefer 84, Jack Rowe 81, Chris Pappas 79XX, Dennis Lantz 79X Scott VanArsdale 74. Among the women's scores were Missy Dildine with 65X and Sharon

Keefer's 57X. Youth Scott Mincer (age 12) threw 59.

On Saturday, Gary Fogelman topped the score sheet with 89, Terry Keefer 83X, Rodger Klindt 80, Brandon Anderson 77X, Scott Van Arsdale 74. Missy Dildine scored 50 for the top scoring woman. Fifteen year old Bob Rowe scored 73 and Scott Mincer pulled a 44X.

Tarps covered flintknappers and cordage makers helping to keep them dry, as three new "Ooga Booga" members were brought aboard Friday night. We would like to thank those who came to our Earthday gathering. A special thanks goes to Frank and Pam Shabazian for the use of the E.M.C. Club grounds. (Sorry about the ruts). Hope to see you all back next year.

---

### Voices From the Past:

Dear Leni,

I think the April, 2000 newsletter was the best yet. It reflected the international aspects of the WAA. The list of seventy "Atlatl Events Around the World - 2000" was very impressive. The Columbian Muisca's atlatl article was very educational as were all the other articles and letters to the editor. Keep up the very good work you are doing.

When you write up the institutional history of WAA, remember the Roaring Fork Valley Chapter of the Colorado Archaeological Society (CAS) had just formed in early 1987. In August, when Bill Tate arrived to give a demonstration at our first annual chapter picnic near the Crystal River, he and Doug Bowman sparked everyone's interest in the modern sport of the atlatl. At the picnic, I asked Bill if there was any sort of atlatl organization and he said, "No."

Because I had just finished compiling all the non-profit papers for the new CAS Chapter, I said that I would be glad to do the same for an atlatl association. And he said, "yes, go to it." We got the paperwork together and all the members got together, and working together made WAA what it is today.

Credit goes to those really dedicated members who have given countless hours of their time (for no compensation whatsoever) and a large segment of their lives, driving around the country to events and communicating with everyone interested in the atlatl. To them, we should really give thanks.

Charles Lilly

Hāku, Maui, Hawaii

*Ed. Comment: The credit goes to Charley Lilly for the foresight to form the group. He never wanted to get too deeply involved in running the organization and declined nomination for President, but served as Secretary for several years. A few years ago he*

*moved from his central Colorado home to sunny Maui. Charley, we give you our thanks.*

\*\*\*\*\*

Dear Leni,

I am having fun with my atlatl, and demonstrating and having others try it for the first time. The question most often asked after a first experience is "How do you say that?" I am making my own darts as per the instruction material (Jim Ray's article "Brief Description of Atlatl Styles, Construction and Usage") that I received from you. I learned a few beginner tricks on my own during construction.:

I found that drilling a cupped end on the dart is not nearly as easy nor as precise as burning one in. Burning is quick and has the added advantage of fire-hardening the cup shape. A burning tool is simple to make from a 4 inch spike or any appropriate size piece of metal rod. Just sharpen a point the desired shape, heat with a propane torch and apply to the end of the dart shaft and with very little pressure you get perfect results.

To trim my fletching to 1/2 inch width, I simply lay a 1/2 inch strip of stiff leather along the feather and trim along the edge with a pair of scissors.

Once I determine the spline stiffness side of my 3/8 inch diameter wooden dart shaft, I mark it with a red dot near the back end. That marks the top when mounted on the atlatl for launch. I then draw a line from that point to glue on my first feather. To mark the exact position for the other fletches, I use a simple piece of soft leather with equal spaces marked off and by wrapping it around the shaft starting at the mark for my first feather, I get a quick reference point to glue on my other two feathers.

I am alone here in the atlatl world trying to generate interest. One of the first things I do when demonstrating is simply allow interested people to throw the dart as far as they want. Then we work down to a 25 to 30 yard target, which might be a piece of foam or cardboard box. A good time is usually had by all. If any of your experienced people disagree with my approach, please let me know.

Garnet Anthony  
Sherwood Park, Alberta, Canada

### **WAA Safety Guidelines Revised**

A revision of the World Atlatl Association's Safety Guidelines has been made by Secretary Leni Clubb with Safety Officer, Hallie Cash. As you know, Safety continues to be a major purpose of the World Atlatl Association and a requirement for obtaining the WAA Grand Champion Award for presentation at your event. I urge all contest organizers to write to our Secretary for a copy.

Love is grand – Divorce is a hundred grand.



### **ON TARGET**

In this issue there is such a good article by Ray Strischek of Athens, Ohio on how to improve your throwing skills, that I have reprinted it and have it available for anyone just for the asking. No charge – it is my donation to the "cause".

This year there have not been as many requests for WAA Grand Champion Awards which are available to organizers of atlatl contests. Have you forgotten that you can receive it at no cost to your group? The World Atlatl Association is pleased to support your contests in this way; we hope that this will promote interest in WAA, atlatl safety and encourage the perpetuation of the atlatl as a modern sporting device. Do send for an application and the accompanying information.

How would you like to have a pair of WAA magnetic signs for your car to sport at contests? They measure 5X7 inches with the black WAA logo on a white background much like the WAA patch. These signs are weatherproof and cost \$25.00 for a set of two -- postage included. Place your order with me now, or when you see me at one of the various contests this summer.

I will be on the atlatl circuit from July 12 until August 3, so don't be concerned if I don't reply to any of your e-mails, telephone calls or letters. I will catch up when I return home.

Have you got a new "ATLATL" license plate? If you do, send a photo of it to Bill Tate for the newsletter. Join the club within a club. (These make quite an impression on spectators when the cars with ATLATL license plates are all lined up next to each other at contests.)

As one of his last official acts as President, Charlie Brown has proclaimed the year 2000 Safety Year. He asked that each of us be constantly aware of safety concerns, whether as a participant or spectator. New Safety Guidelines are being completed and will be available for everyone soon.

As one of our members always says, "Keep some wood in the air!"

Leni [LENIWAA@prodigy.net](mailto:LENIWAA@prodigy.net)

### **NEW BOOK AVAILABLE ...Soon.**

by Kris Tuomala

Walking on Old Ground

As some of you may know, I have written a book on how to make your own basketmaker atlatl and

dart. At this time, the book is at the printer's and I am hoping to hear from them soon. I had hoped to have copies ready by next week (written early June) but that is doubtful at this time. My book signing party at the Log Cabin Store in Neosho, Missouri is on hold for now. I'll let you all know when a definite date is forthcoming. If some of you would like to reserve a copy, the price is \$5.00 plus \$1.00 shipping/handling. Sorry about the delay. I am already working on another book pertaining to other aspects of the primitive hunter/gatherer life to be out next year.

## ATLATL BATTLE

by Scott Van Arsdale

An Atlatl Battle broke out at the Atlatis in Action event in Waverly, New York. The "war" was really a game that Bob Berg dreamed up. About twenty atlatlists split into two "tribes," the Macaws and the Smoked Monkeys. Each participant took three darts, grabbed a bale of hay and attached a standard 8.5X11 inch piece of paper with their name written on it, and headed to their tribe's side of the field. For the first battle, each tribe designated a chief and a shaman. Warriors picked a spot on the field for their bale, the bales becoming the warriors body during the attack, and had to throw darts at the other side's bales from that spot. A dart in the paper or two sticking in the bale meant the "death" of the owner of that bale. Since real injuries were not the object, tribes took turns launching attacks with the opposing force well clear of their bales. Three throws were made by each warrior. The "defenders" heckled the offenders from the sidelines! A tribe could win in one of two ways: "kill" the opposing tribe's chief and shaman, or "kill" all of its warriors. The shaman was not allowed to move his bale between attacks; but the chief could move anywhere, but had to leave his or her bale in the most recent offensive position for the return attack. To make things fair, warriors "killed" by the first tribe to attack were allowed to participate in the return fling before heading to the happy hunting grounds. The Smoked Monkeys ruled supreme after the first battle, rapidly dispatching the Macaw chief and shaman.

All of the dead folks were brought back to life for a second battle, and the chief/shamon rule was eliminated, making it necessary for a tribe to send all opposing warriors to the spirit world to win. Tribes concentrated on getting rid of the opponent's top throwers, which created a lot of pressure on some inexperienced warriors to bring glory to their tribe as they were the only ones left to do it. The Smoked Monkeys ruled again, but the Macaws finally made their ancestors proud by winning the final battle.

War is hell, but all of the warriors had a great time in spite of being wounded and killed. Many possible variations of Atlatl Battle were discussed, including tracing the warriors bodies on cardboard, where a hit to the atlatl arm would force that warrior to throw with the other arm, or a hit in a vital section would be the end. Anyway, event organizers may want to consider staging battles at their events as long as the area is big enough to keep spectators and the defending tribe out of danger and provided safety rules are followed.

## WAA Annual Meeting Highlights

by Leni and Bill

The annual meeting was held June 17<sup>th</sup> following a wonderful day in the field at Fremont Indian State Park, Utah. President Charlie Brown conducted the meeting in the auditorium of the park's museum. Twenty-one WAA members, including seven members of the Board or Directors, and several visitors attended.

**Amendments to the bylaws:** Already having been approved by the Board, new bylaws were presented for a membership vote. The major item of change was that the term of office for the President and Vice President is now two years. The Board members term will continue at three years. Jim Ray and his committee were congratulated for their work on updating the bylaws.

**Annual Meeting site:** Flint Ridge State Park near Newark, Ohio has been selected as the site of our 14<sup>th</sup> Annual Meeting (year 2001). As arrangements are worked out, they will be announced on these pages. The Board decided that the sites for annual meetings should alternate, if possible, east and west of the Mississippi River to give all members an opportunity to attend these important meetings.

**New Officers:** To no one's amazement, Jim Ray was made the new WAA President. Although Ray Strischek had been nominated for Vice President, he declined at the last minute due to conflicts. Susie Brown was then asked to fill that slot and was elected. Following an amazingly close vote, the two vacant Director positions were filled by Dean Pritchard and Ron Mertz. A complete list of the officers appears elsewhere in this issue.

**Dues Increase:** For the first time since the Association was organized, an increase in dues was announced. Now, general membership is \$15.00 and Family \$20.00. This flat \$5.00 increase was felt necessary to continue with this newsletter and at times, increase the number of pages so that more atlatl material is presented. Also noted was a pending postal

price increase and the several increases in postage costs which have taken place in the past 13 years. There will no longer be an additional postage charge levied against Canadian and overseas memberships.

### **Mountain State Forest Festival Atlatl Competition**

by Kathy Leombruno

The Mountain State Forest Festival will host an atlatl competition Saturday, September 30, in conjunction with the 2000 County Fair at the scenic Camp Pioneer in Beverly, West Virginia. The atlatl contest will get underway at 10:00a.m. Following the contest, WAA members are invited to participate in an atlatl exhibition for fair spectators.

Mountain States Forest Festival is one of the largest and oldest festivals in the United States, annually hosting nearly 200,000 visitors from across the nation and many foreign countries. The festival is scheduled for Sep. 29 – Oct. 8, 2000 and features over 100 events, attractions, and headline entertainment. (A Schedule of Events may be obtained by calling (304) 636-1824, or clicking at [www.forestfestival.com](http://www.forestfestival.com) .

The atlatl competition will feature three divisions with leaf plaques awarded to first and second place winners in the following categories: Children's Division (under 12), Amateur, and Advanced. Chairing the event are atlatl enthusiasts, Ella and Tom McLaughlin of Elkins, WV.

Atlatl registration cost is just \$5.00 and includes admission to the Forest Festival County Fair. The fair's agenda includes an Antique Car and Farm Equipment Show, Arts and Crafts Show, Fish Museum Exhibit, 4-H and Extension Exhibits, Livestock Auction, Peddle Tractor Pull, Pet Show, Fiddle and Banjo Championship Contest, Bingo, Fireman's Combat Challenge, Comedy and Magic Show, Auctioneer's Contest and much more.

Hotel and camping accommodations may be found at [www.randolphcountywv.com](http://www.randolphcountywv.com) or by calling the Chamber of Commerce at 1-800-422-3304. If you've never been to West Virginia in the Fall, nature paints an unbelievable mountain backdrop for this festival. Come and partake in a great festival and enjoy the breathtaking views.

### **EUROPEAN LANDING FORCE**

by Bill and Jim

The Europeans are coming! The Europeans are coming! By the time you read these pages it will have already begun. July is the big month, starting with competitions in Candor, New York, with the battle of the Champions on the 4<sup>th</sup> of July, and then Chelsea,

Michigan on the 9<sup>th</sup> where Jim Gilligan has organized another great tournament with 60 throwers expected. He has secured a great camping site at Brighton Recreation Area with bathroom facilities and a lake for swimming. Camping is a Buck a night.

Following these eastern competitions, the group moves to Montana City, near Helena for the great Annual Montana Mammoth Hunt July 15-16. Jim Ray ((406) 736-5274 and Troy Helmick (406) 266-3398 have organized a number of special treats besides the atlatl competition. These include: A free tour of the C. M. Russell Art Museum in Great Falls, 9:00 a.m. Thurs. Jul. 13<sup>th</sup>. A free guided tour of the Montana Historical Society Museum at 1:00 p.m. Friday, July 14<sup>th</sup>. And on Saturday, a free tour of a local archaeological dig and viewing of artifacts conducted by Dr. Les Davis, Group meals are planned at local restaurants both contest days. Following the Mammoth Hunt on Saturday and Sunday, our friends move on to sightseeing in Yellowstone, the Grand Tetons, etc.

We meet again the weekend of July 22-23 at Curt Gowdy State Park between Cheyenne and Laramie in Wyoming for The Foothills/Mountains Atlatl Contest. Organizer Russell Richard (307) 347-4360 gives throwers their choice of two atlatl contests: The more difficult Mountain contest and the less difficult Foothills contest. The Sunday competition will be devoted to primitive bow and arrow use.

Sunday evening will be spent at Charlie and Susie Brown's (303) 421-0035 for dinner and social gathering, and the next day will be an abbreviated Aurora Spear Sling Fling Thing. A late lunch or early dinner will take place at Bill and Marcia Tate's (303) 755-5591 home.

From there it's on to more sight-seeing before the final competition at Fremont Indian State Park in Utah, on just about the roughest course in the country. This weekend competition is being called "The Great American West Atlatl Shoot out." There will be free Park camping in sites No. 15, 24, 25, 26, 27, 28, 29, 30, and 31. Pete Weimer, Park Asst. Manager (435) 527-4478 has set up this event which includes some group meals both days prepared by Kay Weimer. At the park at this same time will be a "Mountain Man/Fur Trapper Rendezvous." After the contest each day you are encouraged to take a free guided tour of the park and its petroglyph sites in horse-drawn wagons. You may expect additional surprises from Pete at this event. (That's all we are allowed to tell you!)

Take it from the "Old Mammoth Hunter," if you miss these contests, you'll miss the most exciting ones in the U. S. this year. We hope you will come to all of these exciting events and meet your European brothers and sisters. Let's give them a good taste of



American hospitality.

## ISAC RESULTS

by Lloyd Pine

The big news so far this year is in the women's scores. Susie Brown's world record of 73, set last year has been broken twice so far this year. On May 7, Missy Dildene from Sayre, Pennsylvania threw a score of 76. Only three weeks later, Anita Lukes of Indianapolis, Indiana surpassed this with a 77.

Doug Majorski who led the youth division last year is currently leading the men's division with a 91XXX closely followed by Scott Van Arsdale with 91X. However, three former world champions are right on their heels. Bobby Rowe leads the youth division with 73 and Tommy Goble, Jr. in second place with 64.

### WOMEN

Score	Name	From	*Equip.
77	Anita Lukes	Indiana	O
76	Melissa Dildine	Penna.	P
68	Sherry Bracken	Georgia	P
67	Lori Majorsky	Penna.	P
58	Sharon Keefer	Penna.	P
54	Margie Takoch	Ohio	O

### YOUTH

73	Bobby Rowe (15)	Pennsylvania
64	Tommy Goble, Jr. (13)	New York
59	Gael Speckens (14)	Belgium
59	Scottie Mincer (12)	New York
58	Charlie Bracken (12)	New York
55	Robin Morucci (10)	Italy
52	Jimi Gilligan (15)	Michigan
52	Nick Mertz (11)	Illinois
51	Maurizio Doni (14)	Italy
49X	Bobby Frank (14)	Pennsylvania
44	Tyler Stumpe (10)	Missouri
44	Scott Mincer (12)	New York
42	Nathan Potter (11)	Colorado
40	Keiko Long (11)	Wyoming
40	Zack Irvine (14)	Ohio

### MEN

91XXX	Doug Majorsky	Penna.	O
91X	Scott Van Arsdale	New York	O
89XX	Terry Keefer	Penna.	P
89	Gary Fogelman	Penna.	P
89	Ray Strischek	Ohio	P
88X	Bernard Ginelli	France	P
87X	Jeremy Bard	Penna.	P
87X	Jim Gilligan	Michigan	O
86	Jim Ray	Montana	P
86	Chuck Butorajac	Penna.	O
85X	Chris Oberg	Michigan	P

85X	Chris Pappas	New York	P
85	Bob Berg	New York	O
84X	Denny Bard	Penna.	P
84	John Whitaker	Iowa	O
83	Charlie Brown	Colorado	P
83	Martin Strischek	Ohio	O
82X	Mark Bracken	Georgia	P
82X	Paul Gleckl	Penna.	P
82	Mike Glenn	Ohio	O
81	Brandon Anderson	New York	P
81	Tom Mills	California	P
81	Jack Rowe	Penna.	P
80X	Andy Majorsky	Penna.	O
80	Emanuel Demoulin	France	P
80	Ray Madden	Missouri	P
80	George Bigelow	Missouri	O
79X	Dennis Lantz	Penna.	O
79	Ron Mertz	Illinois	O
78	Alain Gros Piron	France	P
78	Don Roberts	Ohio	O
76	Isreal Yahemdi	France	P
76	Eric Sauvion	France	P
75	Frank Takoch	Ohio	O
75	Russell Richard	Wyoming	P
74X	Dean Pritchard	Idaho	O
74	Dale Torma	Minnesota	O
71	Claudio Sarti	Italy	P
70XX	Bill Tate	Colorado	O
70	Paul Marco	Penna.	P

\*Equip. O -- Open P -- Primitive

I always wanted to be a procrastinator  
but never got around to it.

We hear that the reason Santa is so jolly, is because he knows where all of the bad girls live.

### WAA Officers and Board of Directors

Roster: Term expires:  
President  
**Jim Ray** 2000  
 437 Evans Riceville Road, Belt, Montana 59412  
 (406) 736-5274

Vice President  
**Susie Brown** 2002  
 14560 W. 58<sup>th</sup> Place, Arvada, CO 80004  
 (303) 421-0035 [ssazzi@earthlink.net](mailto:ssazzi@earthlink.net)

Executive Secretary/Treasurer  
**Leni Clubb** Unspecified  
 P. O. Box 56, Ocotillo, CA 92259  
 (760) 358-7835 [LENIWAA@prodigy.net](mailto:LENIWAA@prodigy.net)

Members of The Board of Directors

- Bill Tate** (Editor, *The Atlatl*) 2002  
 1390 S. Paris Court, Aurora, CO 80012  
 (303) 755-5591 [atlatl@mho.net](mailto:atlatl@mho.net)
- Tim Boucher** 2001  
 P. O. Box 2440, Dillon, CO 80435  
 (970) 468-2197 [boucher@colorado.net](mailto:boucher@colorado.net)
- Gary Fogelman** 2002  
 245 Fairview Road, Turbotville, PA 17772-9599  
 (717) 437-3698 [iam@mail.csrlink.net](mailto:iam@mail.csrlink.net)
- Jim Gilligan** 2001  
 7273 Hamburg Road, Brighton, MI 48116  
 (810) 231-2314 [atlatl@tir.com](mailto:atlatl@tir.com)
- Ray Madden** 2002  
 1256 S. Silver Leaf Road, Joplin, MO 64801  
 (417) 781-0962 [rhadden@janics.com](mailto:rhadden@janics.com)
- Jeff McGill** 2001  
 3889 Midland Drive, Roy, UT 84067  
 (801) 292-6634 [jeffrey.j.mcgill@l-3com.com](mailto:jeffrey.j.mcgill@l-3com.com)
- Ron Mertz** 2003  
 11829 Claychester, Des Peres, MO 63131  
 (314) 822-2514 [103210.2044@compuserve.com](mailto:103210.2044@compuserve.com)
- Dean Pritchard** 2003  
 3974 Lena Ave., Boise, ID 83713  
 (208) 323-0293 [atlatl@micron.net](mailto:atlatl@micron.net)
- Ray Strischek** 2002  
 10810 Peach Ridge Road, Athens, OH 45701  
 (740) 592-1217 [harsec@yahoo.com](mailto:harsec@yahoo.com)

Honorary Directors (Past Presidents)

- |                     |                           |
|---------------------|---------------------------|
| <b>Bill Tate</b>    | <b>Leni Clubb</b>         |
| <b>Tim Boucher</b>  | <b>Bonafacio Cosyleon</b> |
| <b>Troy Helmick</b> | <b>Charlie Brown</b>      |

**OLYMPICS ANYONE??**

We've received word from Bob Berg that he and others are studying The Olympic Charter working toward "getting the WAA into the Olympics." Keep us informed of any progress and how we may work with you on this idea. (We seem to recall Chuck Butorjac talking "Olympics" a couple of years back. Chuck, you had better make contact with Bob.)

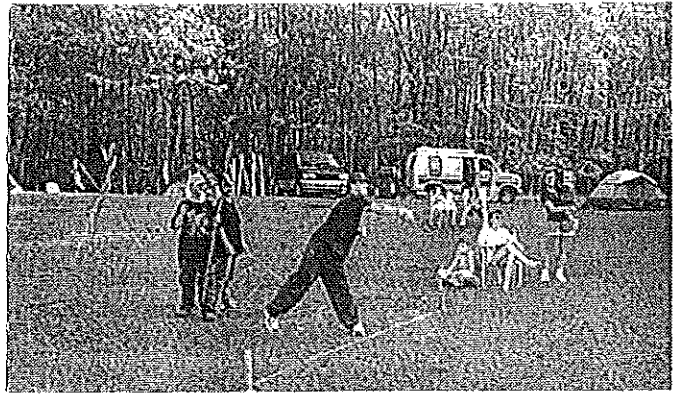
If you think you are a person of some influence, try ordering somebody else's dog around.

**The Keefer Klan Atlatl Competition**

May 6-7 2000

by Terry Keefer

A picture perfect weekend. Wow! We had a good time as the following photographs show.



Josh Neil - Youth Division



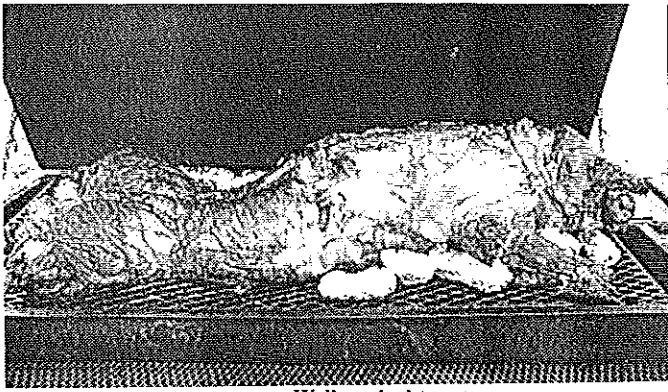
Margie Takoch, Toni Roberts, Missy Dildine, Lori Majorsky, and Sharon Keefer.



Sharon keefer presents Missy Dildine with her First Place Women's Award for the State and European Combination Competition.



On the course - European style.



Well, we had to eat.



And, we had a little music.

### Pascal's Corner

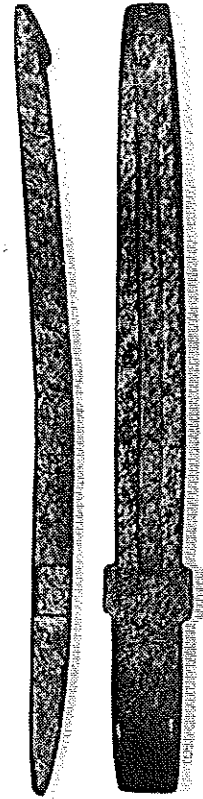
A first in our European Championships: the cancellation of an atlatl contest! It was Sunday morning, May 28<sup>th</sup> at Crepy-en-Valois in Oise, France. The course was usually set up in a public park, but unfortunately, the wind was so strong that a lot of trees were broken and the mayor was forced to forbid us access. After an hour of discussion, we found a gap and gathered the ten targets together in a meadow and the contest took place at last. Following a group meal, we also had an ISAC. The rain did not favor us, and the results were disastrous. It was, nevertheless, an opportunity to meet our distant friends.

Top throwers in this Open contest  
with 50 throwers

- 1<sup>st</sup> Pascal Chauvaux (Belgium)
- 2<sup>nd</sup> Jerome Galetti (France)
- 3<sup>rd</sup> Patrick Bidart (France)
- 4<sup>th</sup> Eric Braconnier (France)
- 5<sup>th</sup> Thomas Chauvaux (Belgium)
- 6<sup>th</sup> Bernard Ginelli (France)
- 7<sup>th</sup> Michel Curco (France)
- 8<sup>th</sup> Daniel Vallet (France)
- 9<sup>th</sup> Christian Casseyas (Belgium)
- 10<sup>th</sup> Franck Reusen (Belgium)



New French thrower, Jean-Marie Brion

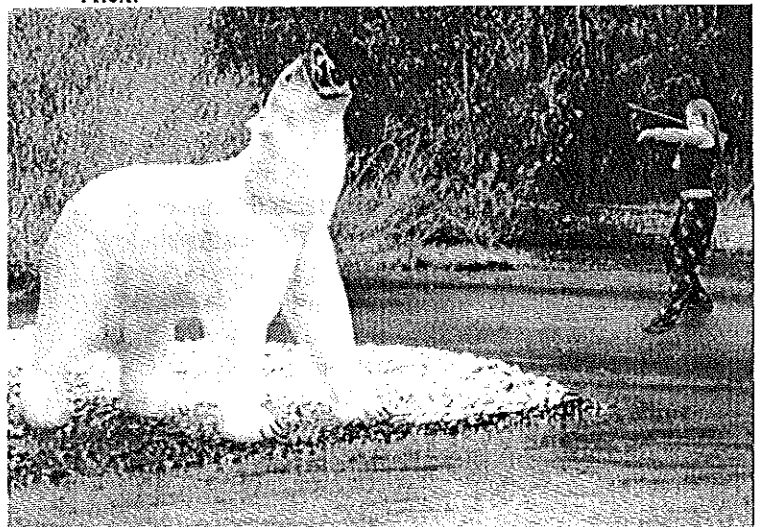


Stone atlatl from the Royal Museum of Art and History, Brussels, Belgium.

I traditionally submit photographs of atlatl related items. This time, it is a photo of a stone atlatl from the pre-Classic period of Mayan culture, 200 B.C. to A.D. 200. It was found in San Juan de Los Arcos, Jalisco, Mexico. Twenty-seven centimeters (about 10 ½ inches) in length, it seems to be a votive or funeral androgyne (meaning spur within the groove) atlatl.

### Antics at the Boise Zoo?

Well not really, The bear was digitally "shot" by photographer, Barry Bade and placed against a background of the Boise River in Idaho by Dean Pritchard. The young atlatlist is his granddaughter, Alex.



Dear Mr. Tate,

Many moons ago (October 1998) you were kind enough to mail me some photocopies of prehistoric atlats following my e-mails about my attempts to build an atlatl for my anthropology class. Well after trying to build one and failing, my school district purchased one of your pre-made atlats. It has been most successful in explaining to the students the progression of projectile technology.

My lab begins with the students trying to spear "fish" (apples) in a "river" (children's swimming pool). The spear is a tomato stake with an old fork duct taped to it. This is to get them to understand the concept of extending the killing force beyond mere arm's length.

The lab continues with the students throwing practice javelins (provided by the Track & Field Team). This is to get them to understand the concept of extending killing force beyond reach.

The lab concludes with the students using the atlatl to see how it is a dramatic refinement of the spear, in that it is more accurate and requires less effort to use, but has a greater killing force than a spear.



A "headless" Matthew Higgins launches a long one.



Anthropology Lab, Morris Knolls High School. Matthew Higgins and his students.

I'll be the first to admit that this presentation is rather basic, however, after participating, the students do grasp the concept behind projectiles and when they travel to the American Museum of Natural History in New York, they are able to point to various developments seen in different cultures. They also enjoy doing something for real as opposed to using

some computer simulation.

Matthew Higgins

Teacher of Anthropology, Morris Knolls High School, Rockaway, NJ

## Fort Casper Rendezvous and Primitive Skills Contest

by Ken Wee

Under the best weather and throwing conditions in 12 years, 15 competitors from WY, CO, KS, MT, Canada, and Germany threw in five separate atlatl matches held on June 24<sup>th</sup> and 25<sup>th</sup> in Casper, Wyoming. An excellent grounds and safe, clearly marked ranges were provided by the hard work of Rick Young of the Fort Casper Museum and the Platte Valley Muzzle loaders.

On Saturday morning, the Atlatl Hunt and American Field Round were held. The scores from these two contests were combined to determine the World Atlatl Open winners.

After lunch, the WAA Target and Accuracy Round was held, open to both modern and "primitive" equipment. Following supper, an ISAC was held. A second ISAC followed on Sunday morning.

Russell Richard and his relatives and fiancée continue to show up in the winner's circle at atlatl events, as evidenced by the fact that half of the winners were related to Russell. Writer Mike Randolph of Canada collected information and photos for a book about atlats and Kansas State Historical Museum staff member Randy Theiss competed for the second year in a row.

With 30 points possible, the winners were: Youth—Shane Ryker, age 8, with a score of 9, followed by Keika Long, age 11, who scored 4 points; Women—Regina Dodson 8, Shaunna Perkins 6, and Isolde Wagner, 3; Men—Ken Wee 21, Jim Ray 18, and Russell Richard 15.

With 45 points available, the American Field Round winners were: Youth—Keiko Long, 1<sup>st</sup> and Shane Ryker, 2<sup>nd</sup>; Women—Regina Dodson, 1<sup>st</sup>, Shaunna Perkins, 2<sup>nd</sup>, and Isolde Wagner, 3<sup>rd</sup>; Men—Jim Ray, 1<sup>st</sup>, Ken Wee, 2<sup>nd</sup>, and Russell Richard, 3<sup>rd</sup>.

World Atlatl Open finalists were: Youth—Keiko Long, 1<sup>st</sup> and Shan Ryker, 2<sup>nd</sup>; Women—Regina Dodson, 1<sup>st</sup>, Shaunna Perkins, 2<sup>nd</sup>, and Isolde Wagner, 3<sup>rd</sup>; Men—Jim Ray, 1<sup>st</sup>, Ken Wee, 2<sup>nd</sup>, and Russell Richard, 3<sup>rd</sup>. Jim Ray of Belt, MT was Grand Champion with a score of 52XX.

WAA Target and Accuracy Round winners were: Youth—Keiko Long 27 and Shank Ryker 35; Women—Regina Dodson 24, Shaunna Perkins 31, and Isolde Wagner 31; Men—Russell Richard 16, Jim Ray 17 and Ken Wee 18. Grand Champion was Regina Dodson of Cheyenne, Wyoming.

The highest ISAC scores were Russell Richard 81, on Saturday and Jim Ray 82, on Sunday.

### Contest Results January-May

by Chuck Butorajac

**Bundle Up and Throw, 1/22/00.** With temperatures between -2° and 14° F., 14 dedicated throwers showed up for the first throw of 2000. PA State Competition high scores were: Women—Sharon Keefer 92, Missy Dildine 81, Lori Majorsky 77, and Margie Takoch 70; Men—Terry Keefer 111XXXX, Gary Fogelman 110, Doug Majorsky 109, Chuck Butorajac 93, and Frank Takoch 91. Top ISAC scores were Gary Fogelman 84, Terry Keefer 80, Doug Majorsky 76X, Jack Row 70, and Sharon Keefer 50.

**Finger Freezing ISAC, 2/5/00.** In 7 inches of new snow and 30°F. weather, there were 15 throwers. PA State Competition high scorers were: Lori Majorsky 81, Missy Dildine 72, Sharon Keefer 68, and Margie Takoch 62; Men—Chuck Butorajac 106X, Doug Majorsky 105X, Gary Fogelman 99X, and Don Roberts 98X. Top ISAC scores were Terry Keefer 82, Gary Fogelman 82, Doug Majorsky 79X, Missy Dildine 58, and Sharon Keefer 50.

**Give Me a Brake ISAC, 3/4/00.** Twenty throwers turned out to compete under sunny skies and moderate temperatures. PA State Competition scores were: Women—Sharon Keefer 99, Toni Roberts 94, Missy Dildine 84, Margi Takoch 76, and Lori Majorsky 71; Men—Terry Keefer 126XXX, Chris Pappas 109, Doug Majorsky 104XX, Gary Fogelman 102X, and Don Roberts 101X. Top ISAC scores were: Doug Majorsky 91XXX, Jerry Bard 87X, Terry Keefer 84X, Chuck Butorajac 83, Mike Glen 82, Denny Bard 76, Paul Gleckl 74, Garry Fogelman 72X, Missy Deldine 59, and Sharon Keefer 51.

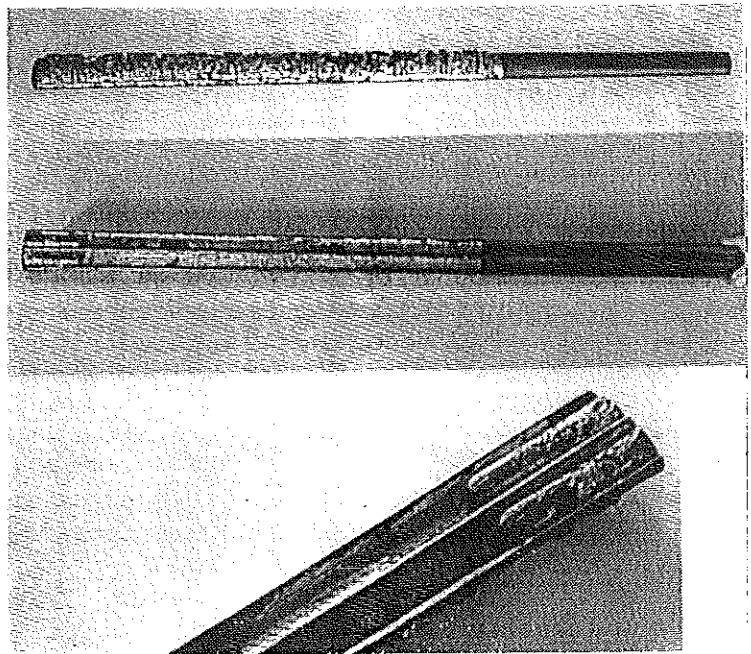
**Rain or Shine, 4/8/00.** It started sunny, but quickly turned rainy. No record scores, but great people. PA State Competition scores were: Women—Margie Takoch 56 and Missy Dildine 44; Men—Chuck Butorajac 85, Jack Rowe 83, Paul Marko 78, Frank Takoch 76, and Paul Gleckl 60. Top ISAC scores were: Chuck Butorajac 86, Ray Strischek 84, Jack Rowe 77, Paul Gleckl 70X, Missy Dildine 54X, and Margie Takoch 54.

**Spring Fling, 5/27/00.** What started as a beautiful day quickly turned to rainy weather. PA State Competition scores were: Women—Sharon Keefer 58, Missy Dildine 58, and Lori Majorsky 52; Men—Terry Keefer 110X, Ray Strischek 104, and Steve Barnett 96X. Top ISAC scores were: Doug Majorsky 85, Terry Keefer 83X, Martin Strischek 83 (his personal best), Paul Gleckel 82X, Ray Strischek 77X, Denny Bard 77, Paul Marko 70 and Jack Rowe 70.

### A Double Barreled Atlatl

by Bruno Morucci

After seeking special permission from the National Anthropology Museum in Florence, I was able to obtain these photographs of this Aztec ceremonial atlatl. The piece was brought from Mexico by members of the noble Medici family of Florence in the XVII century. Made of wood, with carved gold laminations, it is 60 cm. long (about 23 ½ inches). My permission is granted for publication only in *The Atlatl* newsletter. Reproduction or other publication of these photographs is strictly forbidden without the express permission of the National Anthropology Museum, Florence, Italy.



Back, front, and detail of the spurs.

Ed. Comment: Many thanks Bruno for obtaining these wonderful photographs to grace these pages.

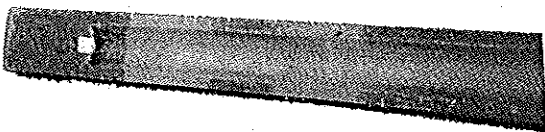
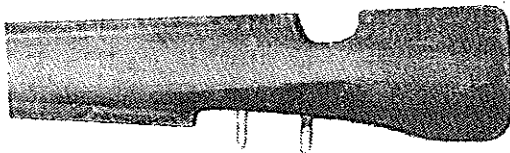
Want to learn flintknapping, but just can't seem to get it right? Check out John McPherson's new video "Breaking Rock." This is the best two hour step by step learning experience you can get for \$29.95. Learn the basic "core" of flintknapping. Once you understand the simple principles you'll be knocking them out with the best of them. Write: Prairie Wolf, P. O. Box 96, Randolph, KS 66554 or call 1 800 258-1232 to order.

Don't sweat the petty things, and don't pet the sweaty things!

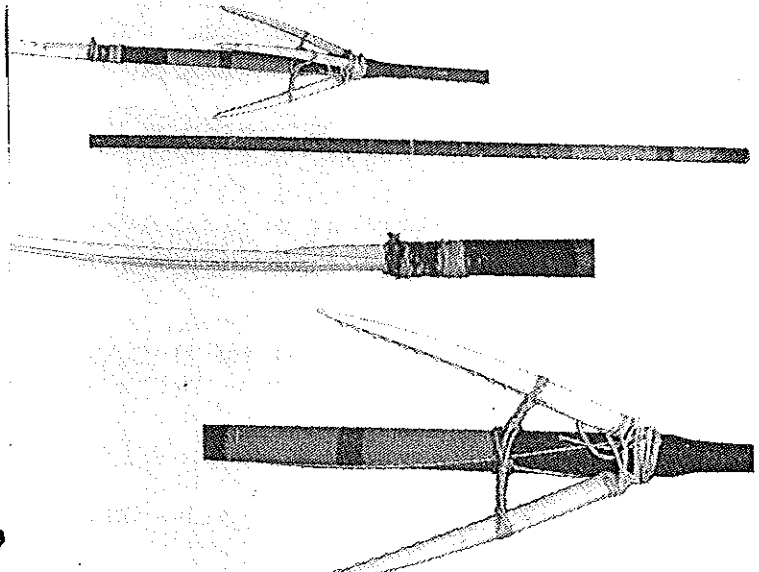
**Some Interesting Artifacts  
From Around the World**  
by Ted Bailey



A Maori spearthrower - New Zealand  
Note the fine wood carving in the detail photographs, middle.  
All views of the same thrower.



An Eskimo thrower of wood with bone or ivory  
spur and finger-holds. (Front, back and detail views).



Details of an Eskimo sea mammal hunting spear.

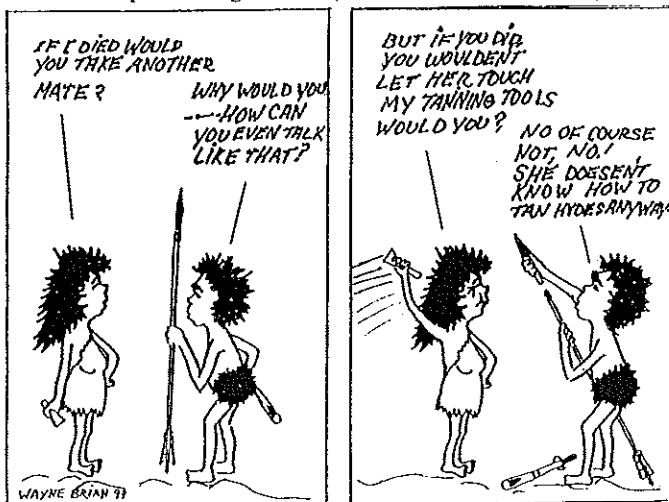
**Flint Ridge, Ohio Contests,  
June 3 and 4, 2000**  
by Ray Strischek

The weather was nearly perfect for two days of atlatl contests that included the Ohio Standard Accuracy Contests and ISACs. Top scores for the Ohio Standard Accuracy Contest on June 3 were: Masters (Men)-Terry Keefer 1<sup>st</sup>, Ray Strischek 2<sup>nd</sup>, and Doug Majorsky 3<sup>rd</sup>; Masters (Women)-Sharon Keefer 1<sup>st</sup> and Eva Dawes 2<sup>nd</sup>; Novice (Men)-Bill Popp 1<sup>st</sup> and Tod Endsley 2<sup>nd</sup>; (Women)-Margie Takoch 1<sup>st</sup> and Eve Dawes 2<sup>nd</sup>. On June 4, the winners were: Masters (Men)-Ray Strischek 1<sup>st</sup>, Terry Keefer 2<sup>nd</sup>, and Andy Majorsky 3<sup>rd</sup>; Masters (Womens)-Sharon Keefer 1<sup>st</sup> and Kristine Lyons 2<sup>nd</sup>; Novice (Men)-Wendal Adams 1<sup>st</sup>, Nate Heitz 2<sup>nd</sup>, and Dale Hopkins 3<sup>rd</sup>; Novice (Women)-Margie Takoch 1<sup>st</sup>, Eve Dawes 2<sup>nd</sup>, and Samantha Adams 3<sup>rd</sup>.

The Ringer Round is open to all. Winners were: June 3-Martin Strischek 1<sup>st</sup>, Steve Barnett 2<sup>nd</sup>, and Ray Strischek 3<sup>rd</sup>; June 4-Frank Takoch 1<sup>st</sup> and Steve Barnett 2<sup>nd</sup>.

ISAC top scores were: June 3-Doug Majorsky 89, Terry Keefer 86, Ray Strischek 84XX, Steve Barnett 75, Andy Majorsky 71 and Frank Takoch 71; June 4-Ray Strischek 88X, Doug Majorsky 85, Richard Lyons 83, Terry Keefer 75, Frank Takoch 72, Martin Strischek 71, and Sharon Keefer 51X.

Several of the most ardent throwers in the group-Gary Fogelman, Paul Gleckl, Chuck Butorajac, Doug Majorsky, and Frank Takoch are all suffering from atlatl elbow and shoulder problems. All are guilty of throwing and throwing until all the daylight is gone.





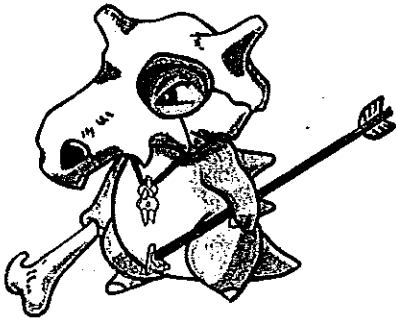
## Atlal Events around the World – 2000

Jul	1-2	Tyron Elk Park Atlal Contest with ISAC, Tyron Elk Park, Rt. 350, North from Bald Eagle, PA. Contact Tim Jackson (814) 684-0402.
Jul	2	Atlal Contest 1:00 p.m. at the Museum of the Aleutians, Unalaska, AK, weather permitting. <a href="http://www.aleutians.org">http://www.aleutians.org</a> Contact Jim Dickson (907) 581-1845 or <a href="mailto:dickson@arctic.net">dickson@arctic.net</a>
Jul	4	The Fourth of July Atlal Contest and ISAC at Candor, NY. Contact Bob Berg (607) 659-5967 or <a href="mailto:courier@spectra.net">courier@spectra.net</a>
Jul	8-9	European Championships and ISAC Palo Laziale, Rome Italy. Contact, Bruno Morucci <a href="mailto:arca@fivenet.com">arca@fivenet.com</a>
Jul	9	Chelsea Rod & Gun Club Tournament, 8 a.m. Chelsea, MI. Contact Jim Gilligan (810) 231-2314 or <a href="mailto:atlal@ism.net">atlal@ism.net</a>
Jul	15-16	Alder Acres Atlal Tournament and Morning After ISAC. Lorraine, NY. Contact Roger Klindt (315) 639-6293, or <a href="mailto:mammothdoc@juno.com">mammothdoc@juno.com</a>
Jul	*15-16	Erreterria, Spain. European Championships
Jul	15-16	Montana Mammoth Hunt and ISAC, Montana City. Contact Troy Helmick (406) 266-3398 or Jim Ray (406) 736-5274.
Jul	22-23	Foothills/Mountains Atlal contest with ISAC at Curt Gowdy State Park, Wyoming. Contact Russell Richard (307) 347-4360.
Jul	*22-23	Monteneuf Guer, France. European Championships
Jul	24	Aurora Spear Shing Fling Thing with ISAC in association with the Aurora Colorado History Museum at Delaney Farm. Contact Bill Tate (303) 755-5591 or <a href="mailto:atlal@mho.net">atlal@mho.net</a>
Jul	29-30	Fremont Indian State Park Special European Throw with ISAC, Sevier, UT, Contact Pete Weimer (435) 527-4631.
Jul	29-30	Saegerstown Indian Artifact Show and Atlal Tournament (local and ISAC) in Saegerstown, PA. Contact Gary Fogelman (570) 437-3698 (for artifact show info. contact John (814) 398-9814.
Jul	*29-30	Hiltzackersee, Germany. European Championships
Aug	3-6	Green Flats Atlal Contest in Hancock, NY. Contact Chris Pappas (607) 637-2585.
Aug	4-6	Illinois Atlal Association Contest, European and ISAC, at Franklin Creek Historic Site, Franklin Grove, IL. Contact Don Asp (815) 456-2305.
Aug	*5-6	Mas d'Azil, France. European Championships
Aug	11-13	Shupp's Grove Weekend at Amsterdam, PA. Friday evening ISAC, Saturday and Sunday local contest and ISAC. Contact Gary Fogelman (570) 437-3698 or <a href="mailto:oriam@csrlink.net">oriam@csrlink.net</a>
Aug	*12-13	Boario Treme, Italy. European Championships
Aug	18-19	Great Lakes Primitive's Summer Gathering, Bois Blanc Island, MI European and ISAC, 2:00 p.m. Contact Jim Gilligan (810) 231-2314 or <a href="mailto:atlal@ism.net">atlal@ism.net</a>
Aug	18-20	Old Stone Fort, Manchester, TN Events 9-5, with atlal contests beginning at noon 18 <sup>th</sup> and 19 <sup>th</sup> and at 11:00 a.m. on the 20 <sup>th</sup> . Contacts Mark Bracken (770) 345-7305 or Ward Weems (931) 723-5073.
Aug	19-20	Ohio Accuracy and ISAC at Albany Ohio. Contact Steve Barnett (740) 698-6553 or <a href="mailto:barnz@juno.com">barnz@juno.com</a> or Ray Strischek (740) 592-3465 or <a href="mailto:db8947@dragonbbs.com">db8947@dragonbbs.com</a>
Aug	25-27	Stone Tool Technology Show and Eastern Seaboard Atlal Contests with three ISACs at Letchworth State Park, Castile, NY. Contact Bob Berg (607) 659-5967 or <a href="mailto:courier@spectra.net">courier@spectra.net</a>
Aug	25-27	Ahlman's Shooters Round-up two miles north of Morristown, Minnesota Black Powder, Primitive Archery, Atlal Ranges with instructors. Contact Skip Edwards (507) 625-3352 or Dave Vavreck (605) 692-4003.
Sep	*2-3	Neanderthal, Germany. European Championships
Sep	2-3	Ohio Accuracy and ISAC at Flint Ridge, OH. Contact Ray Strischek (740) 592-3465 or <a href="mailto:db8947@dragonbbs.com">db8947@dragonbbs.com</a>
Sep	3	Sunday Atlal contest 1:00 p.m. at the Old Ball Field, Unalaska, AK (weather permitting) Can be held indoors if necessary. Contact Jim Dickson (907) 581-1845 or <a href="mailto:dickson@arctic.net">dickson@arctic.net</a>
Sep	9-10	Cahokia 2000 with ISAC. Cahokia World Heritage Site, Collinsville, IL Contact Ron Mertz (314) 822-2514 or <a href="mailto:103210.2044@compuserve.com">103210.2044@compuserve.com</a>
Sep	*9-10	Petersfeldstage, Germany. European Championships
Sep	10	Michigan State Altal Championship and ISAC, 9:00 a.m. Chelsea Rod & Gun Club, Chelsea, MI. Contact Jim Gilligan (810) 231-2314 or <a href="mailto:atlal@ism.net">atlal@ism.net</a>
Sep	16	Northeastern Open Atlal Championship at Chimney Point State Historic Site, Addison, VT. Contact Audrey Porsche (802)7592412 or <a href="mailto:aporsche@dca.state.vt.us">aporsche@dca.state.vt.us</a>
Sep	16	Stand alone ISAC in a.m. and teach PAW PAW Festival crowd the sport of atlalting in Albany, OH. Contact Steve Barnett (740) 698-8553 <a href="mailto:barnz@juno.com">barnz@juno.com</a> or Ray Strischek (740) 592-3465 <a href="mailto:db8947@dragonbbs.com">db8947@dragonbbs.com</a>
Sep	16-17	Fort Osage Atlal Competition and Fall Knap-in at Fort Osage east of Kansas City, MO. Contact Ray Madden at (417) 781-0962 or <a href="mailto:rhadden@janics.com">rhadden@janics.com</a>
Sep	23	16 <sup>th</sup> Annual OHLONE Day with atlal demonstrations, fun throws and instruction 10:00 a.m. to 5:00 p.m. at Henry Cowell Redwoods State Park on Highway 9 near Felton, CA. Contact Ric Johnson (831) 335-3174 or <a href="mailto:richerspl@juno.com">richerspl@juno.com</a>
Sep	23-24	Third Annual Bois D'arc Rendezvous at Spirit Springs 12 miles south of Neosho, MO. Contact Ray Madden at (417) 781-0962 or <a href="mailto:rhadden@janics.com">rhadden@janics.com</a> or Kris Tuomala at (417) 364-8806 <a href="mailto:tuomala@excite.com">tuomala@excite.com</a>
Sep	23-24	Pennsylvania State Championship and ISAC, Ligonier, PA. Contact Chuck Butorajac (724) 238-6878.
Sep	30	Mountain State Forest Festival Atlal competition 10:00a.m. at Camp Pioneer near Elkins, WV. Contact Ella McLaughlin (304) 636-4697 or Cathy Leombruno (304) 636-4095.
Sep	30, Oct 1	Maricmont Belgium. European Championships

Oct	*7-8	Bougon, France. European Championships
Oct	14-15	Candor Fall Festival Atlatl Contest and ISAC, Fallow Hollow Deer Farm, Candor, NY. Contact Bob Berg (607) 659-5967 or <a href="mailto:courier@spectra.net">courier@spectra.net</a>
Oct	22	Wisconsin State Atlatl Championship & ISAC at Monticello, WI. Contact Walter Riddle (608) 245-9970 <a href="mailto:wriddle@chorus.net">wriddle@chorus.net</a>
Oct	28	Saturday Atlatl contest 1:00 p.m. at the Old Ball Field, Unalaska, AK (weather permitting) can be held indoors if necessary. Contact Jim Dickson (907) 581-1845 or <a href="mailto:dickson@arctic.net">dickson@arctic.net</a>
Oct	28-29	All Hallow's Eve Atlatl Throw & ISAC at Charlie Brown's residence in Arvada, CO. Contact Susie or Charlie Brown at (303) 421-0035 or <a href="mailto:sazi@prodigy.net">sazi@prodigy.net</a>
Nov	4	Icicle Contest with ISAC and Primitive Apparel Fashion Show, Tioga Park, Nichols, NY. Contact Bob Berg (607) 659-5967 or <a href="mailto:courier@spectra.net">courier@spectra.net</a>
Nov	25	Saturday Atlatl Contest at 1:00 p.m. Unalaska, AK. To be held indoors with location to be decided at the October 28 <sup>th</sup> event. Contact Jim Dickson (907) 581-1845 or <a href="mailto:dickson@arctic.net">dickson@arctic.net</a>
Nov	26	Last Gasp Atlatl Tournament with ISAC--starts at noon, Brighton, MI. Contact Jim Gilligan (810) 231-2314 or <a href="mailto:atlatl@ismi.net">atlatl@ismi.net</a>

\*Note, The information I received on the European Championships indicated that possibly some of their scheduled events might not include atlatl competition. A few stated that they definitely would hold such competition. I do not have the name of the individual who sent the schedule, but it came from the following e-mail address: [nus.nat.prehist.vyzies@wanadoo.fr](mailto:nus.nat.prehist.vyzies@wanadoo.fr). I would suggest interested parties contact that address for further details. You can also contact Pascal Chauvaux, Rue Au dela de l'Eau, 3 B-5630, Cerfontaine, Belgium - Telephone: (32) 71 64 34 16 or [pascalC@swing.be](mailto:pascalC@swing.be) for assistance, as well.

Please send dates of atlatl events for the newsletter to the WAA Secretary, Ms. Leni Clubb, See address on back cover. Keep submitting your reports, cartoons, and suggestions to us. Your editor can be reached by FAX at (303) 755-1145, or mail at 1390 S. Paris Court, Aurora, CO 80012, phone (303) 755-5591, or by e-mail: [atlatl@mho.net](mailto:atlatl@mho.net)



This is a new character of Pokemon, named Poke-atl. It is not an original character, but a revised design by Silvia Tombolella of Italy and was submitted by Bruno Morucci.

### The History of Medicine

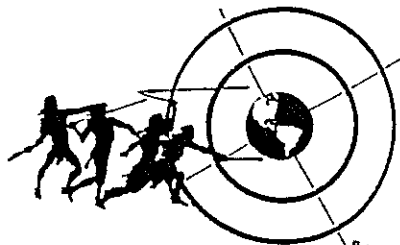
Submitted by Richard A. Baugh

- 2000 BC -- Here eat this root.
- 1000 AD -- That Root is heathen. Say this prayer.
- 1850 AD -- That prayer is superstition. Drink this potion.
- 1940 AD -- That potion is "snake oil." Swallow this pill.
- 1985 AD -- That pill is ineffective. Take this antibiotic.
- 2000 AD -- That antibiotic doesn't work anymore. Here eat this root.

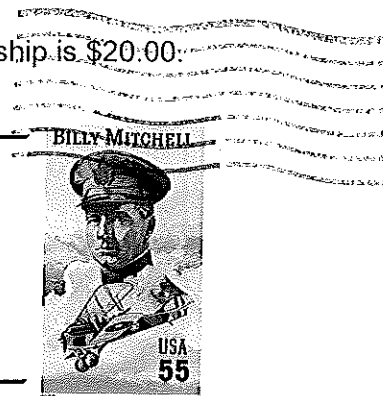
Membership in the World Atlatl Association is \$15.00 per year, family membership is \$20.00:

Send all inquiries and dues to WAA Secretary:

LENI CLUBB  
P. O. BOX 56  
OCOTILLO, CA 92259 USA



The WORLD ATLATL ASSOCIATION, Inc.



JOHN WHITTAKER (9/00)  
DEPT OF ANTHRO, GRINNELL COL.  
P.O. BOX 805  
GRINNELL, IA 50112-0806

WORLD ATLATL  
ASSOCIATION  
WEB SITE:  
[www.worldatlatl.org](http://www.worldatlatl.org)