

The ATLATL

"Too long have I hunted mammoth alone!"

Rich McWhorter

April 1999

THE NEWSLETTER OF THE WORLD ATLATL ASSOCIATION, INC.
1390 South Paris Court, Aurora, Colorado 80012, USA
BILL TATE, EDITOR

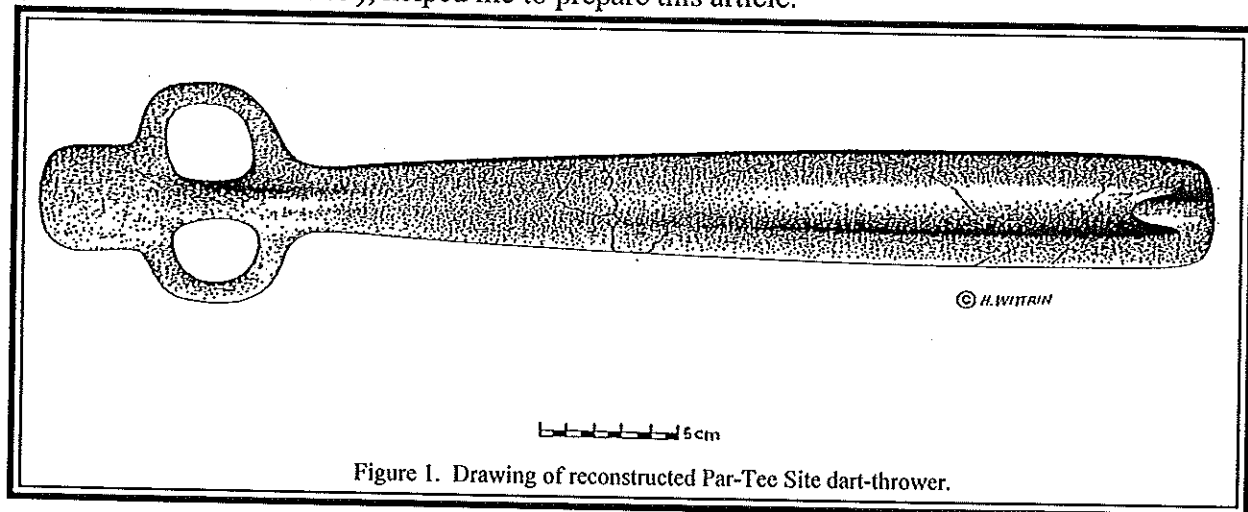
Vol. 12 No. 2

Dart-Throwers in Washington and Oregon: Similarities and Differences

By Lorenz Bruchert

Introduction:

In the past several years, I have been researching/experimenting with dart-thrower technology (Chandler 1998; Hutchings and Bruchert 1997). It was during this work that I came across a report mentioning the recovery of a whale bone dart-thrower from Seaside, Oregon (Pettigrew 1990:523). I followed up on this information by contacting Tom Connolly at the Museum of Anthropology, University of Oregon, Eugene. Through Tom's assistance, I was able to contact and meet with George Phebus, the principal archaeologist, who discovered the whale bone dart-throwers. The result of my meeting with George Phebus, and the information provided from the archaeology report (Phebus and Drucker 1979), helped me to prepare this article.



Since the 1930s, dart throwers (better known by the Nahuatl term "atlatl") or their parts have been found accidentally or recovered from archaeological sites in Washington and Oregon State. Dart-throwers have been found at Plush Cave, Roaring Springs Cave, Par-Tee Site, Chishucks Site, and the McClure dart-throwers were

found inside a cave in a packrat's nest (Cressman and Kreiger 1940; Cressman 1944; Phebus and Drucker 1979; Sauter and Johnson 1974; Strong 1966). In Washington, a dart-thrower was recovered during dredging operations at the mouth of the Skagit River (Borden 1968-69; Fladmark 1986; Fladmark *et al.* 1987; Taylor 1954).

This paper briefly discusses the recovery of the whale bone dart-thrower found at Seaside, Oregon, and an artist's drawing of the reconstructed dart-thrower. A discussion follows with a comparison of dart-throwers from Oregon and Washington in attempt to identify similarities and differences that may exist between them.

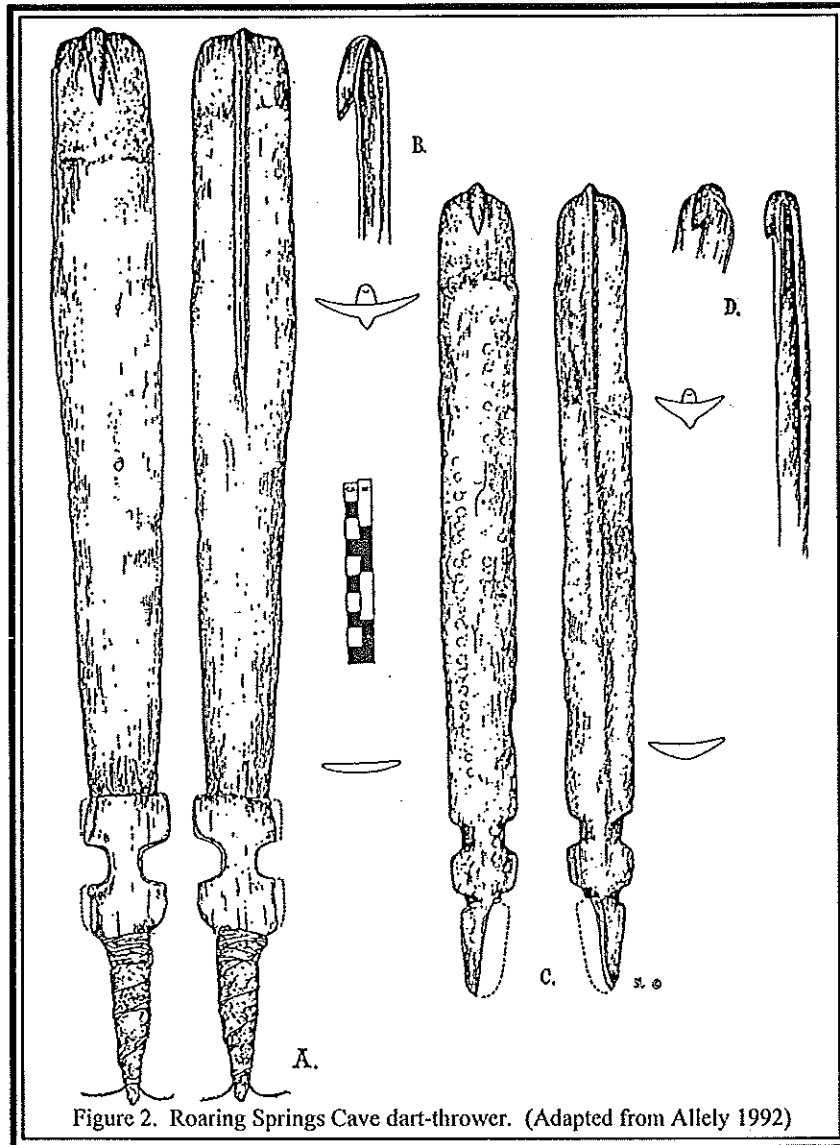


Figure 2. Roaring Springs Cave dart-thrower. (Adapted from Allely 1992)

observed on the McClure dart-throwers (Allely 1992; Strong 1966, see Figure 4). A portion of the Par-Tee site dart-thrower shaft was missing from above the handle and, as a result, it could not be determined if a perforation was made on the ventral surface of this thrower.

Similarities and Differences:

The similarities between dart-throwers found in Washington and Oregon are seen in their functional attributes and their place in time. The parts of the dart-thrower considered to be the functional attributes are the handle, shaft, hook, and the dart-thrower weight. The Plush Cave dart-thrower is not included in this discussion as the functional attributes are considered here to be similar to the Basketmaker II type dart-throwers found in the U. S. Southwest.

Par-Tee Site Dart-Thrower:

During the field seasons of 1967-1977, archaeological work was carried out at Seaside, Oregon at the Par-Tee Site, and other local prehistoric sites (e.g., Palmrose and Avenue Q sites). Among the many artifacts recovered from the Par-Tee Site were numerous fragments of whale bone. The whale bone fragments were later pieced together and identified as parts of dart-throwers. Enough fragments were recovered that up to 75 different dart-throwers were identified, all made from whale bone (Phebus and Drucker 1979). Dart-thrower weights were also recovered from the Par-Tee Site and from the Palmrose Site.

Figure 1 shows a reconstruction of a dart-thrower found in fragments at the Par-Tee Site. The artist replaced the missing parts of the dart-thrower by copying the complete side. The missing parts were the integrated hook, a portion of the dart-thrower shaft above the finger-loops, and part of the finger-loop handle. At the distal end of the dart-thrower, was evidence of wear and/or a break on the dorsal surface where an integrated hook likely existed. In order to reconstruct this hook, the artist referred to drawings of the Roaring Springs Cave dart-thrower (Allely 1992, see Figure 2). The hook is not an exact likeness of the original as we don't know how the original hook was shaped, but it is considered a "possible" likeness.

Fragments of dart-thrower shafts recovered from the Par-Tee Site had a distinct perforation on the ventral surface of the shaft, above the handle, similar to perforations

*he means depression
not perforation*

The following points outline the similarities and differences between these dart-throwers.

(1) Radiocarbon dates in Table 1 indicate that these dart-throwers were used within the last 1000 years of Washington and Oregon's prehistory prior to European contact. This suggests that the dart-thrower and bow and arrow technology co-existed for some time after the bow and arrow was introduced to cultural groups in western North America. Ethnohistorical evidence suggests early explorers to the Oregon Coast witnessed the use of this technology (Spaulding 1969:41).

(2) With the exception of the Roaring Springs Cave dart-throwers, the others (e.g., Skagit River, McClure, and Par-Tee Site) were made with either an integrated or separately attached finger-loop handle for holding the dart-thrower (see Figure 1, 2, and 4). The handles of Roaring Springs Cave dart-throwers have a notch on either side (see Figure 2). The finger-loop handle on one McClure dart-thrower was made from the horn of a bighorn sheep (Strong 1966; see Figure 4).

(3) A perforation on the ventral side above the handle of the dart-thrower shaft was found on the McClure dart-throwers (see Figure 2) and on a dart-thrower shaft from the Par-Tee Site. A weight was attached to a McClure dart-thrower in a perforation (Strong 1966:2; see Figure 2). The Skagit River dart-thrower does not have

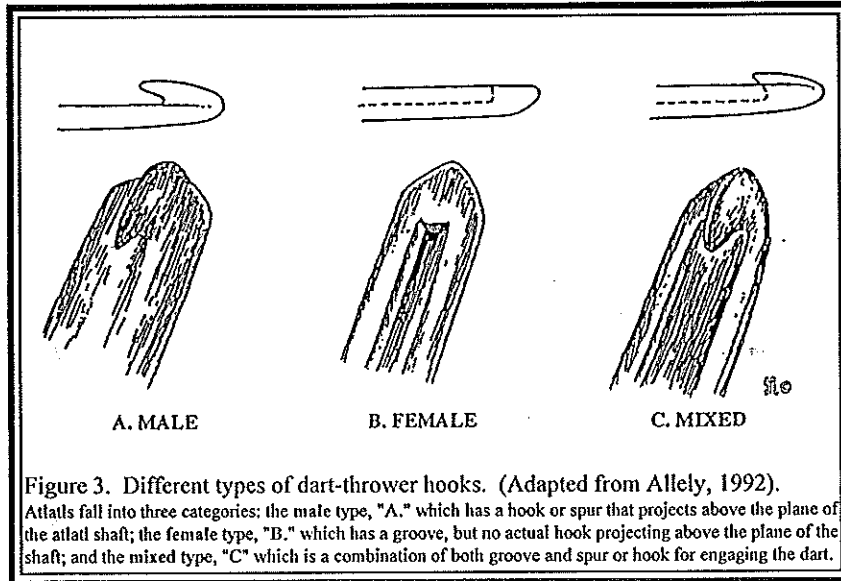


Figure 3. Different types of dart-thrower hooks. (Adapted from Allely, 1992).
Atlatls fall into three categories: the male type, "A," which has a hook or spur that projects above the plane of the atlatl shaft; the female type, "B," which has a groove, but no actual hook projecting above the plane of the shaft; and the mixed type, "C" which is a combination of both groove and spur or hook for engaging the dart.

a perforation on the ventral side, but does have a sculptured figure in the same place where the perforation exists on the McClure dart-throwers. Fladmark (1986:49; et al. 1987:6) suggests that the sculptured figure would have acted as a weight for this dart-thrower.

(4) There is the possibility that other whale bone dart-thrower handles, similar to that on the Par-Tee Site thrower have been recovered, but mistakenly identified as another tool. The finger-loop handle of the Par-Tee Site dart-thrower is similar to "bone combs" described by Sauter and Johnson (1974:33) found at the Chishucks Site, located on the lower Wilson River near Tillamook, Oregon. These bone combs are "likely" dart-thrower handles made of whale bone, but described as "bone combs" by the authors as a result of how the handle fragments were reconstructed.

(5) The hook was the one functional attribute distinctly different between each dart-thrower. A McClure dart-thrower had a "mixed" type hood and the Roaring Springs Cave and par-Tee Site dart-throwers had "male" type hooks (Allely 1992, see Figures 1 and 2). The Skagit River dart-thrower is missing the hook. *But he reconstructed as mixed - and it is not clear how much is broken, how much evidence*

Table 1. Chronological Sequence created by Moss and Erlandson (1995:9, Figure 4).

Dart-Thrower and/or site name	Cultural Affiliation	Radiocarbon Date	References
Skagit River	Marpole Phase	1700±100 B. P.	Fladmark et al. (1987:6)
McClure	Late Marine Culture	1470±140 B. P.	Cressman (1977:106)
Par-Tee Site	Late Marine Culture	A. D. 245-A. D. 915	Phebus and Drucker (1979:25)

Conclusions:

The discovery of whale bone dart-throwers at the Par-Tee site brings new support to archaeologists regarding the recent use of the dart-thrower technology along the Pacific coast. It appears that a cultural group or groups continued using the dart-thrower technology for specific hunting or social purposes long after this technology disappeared from use in other parts of North America. Radiocarbon dates in Table 1 indicate that the dart-thrower was still in use until almost 1000 A.D. in this area. To date,

the Par-Tee Site and quite likely the Chishucks Site represent the only known existence of whale bone dart-throwers on the Pacific coast.

Any cultural similarities that exist between these dart-throwers are still inconclusive. The functional attributes of each dart-thrower were discussed to show "possible" evidence of people sharing technological information over space and time. Although I was able to describe and illustrate where parallels exist between these dart-throwers by examining the functional attributes, there is insufficient evidence to link them culturally. However, the use of integrated finger-loop handles is a regional trend found only in Washington and Oregon. Further research and field work will be necessary to understand why dart-throwers continued to be used after the introduction of the bow and arrow, and whether this dart-thrower type is unique to Washington and Oregon.

Acknowledgment

I would like to thank Mr. Herbert Wittrin for the reconstructed drawing of the Par-Tee Site dart-thrower, Tom Connolly (Museum of Anthropology, University of Oregon, Eugene) for his help and information, and George Phebus (Astoria, Oregon) for providing pictures and information about the Par-Tee and Chishucks Site dart-throwers and dart-thrower parts. Special thanks to Steve Allely for permission to use his drawings in this paper.

Special Note

The dart-thrower fragments from the Par-Tee Site are now in the collections of the Smithsonian Institution, Washington. The Skagit River dart-thrower is in the collections of the Museum of Anthropology, University of British Columbia, Vancouver, Canada. The Roaring Springs Cave dart-throwers are in the collections of the Museum of Anthropology, University of Oregon, Eugene. Their whereabouts of the McClure dart-throwers is unknown.

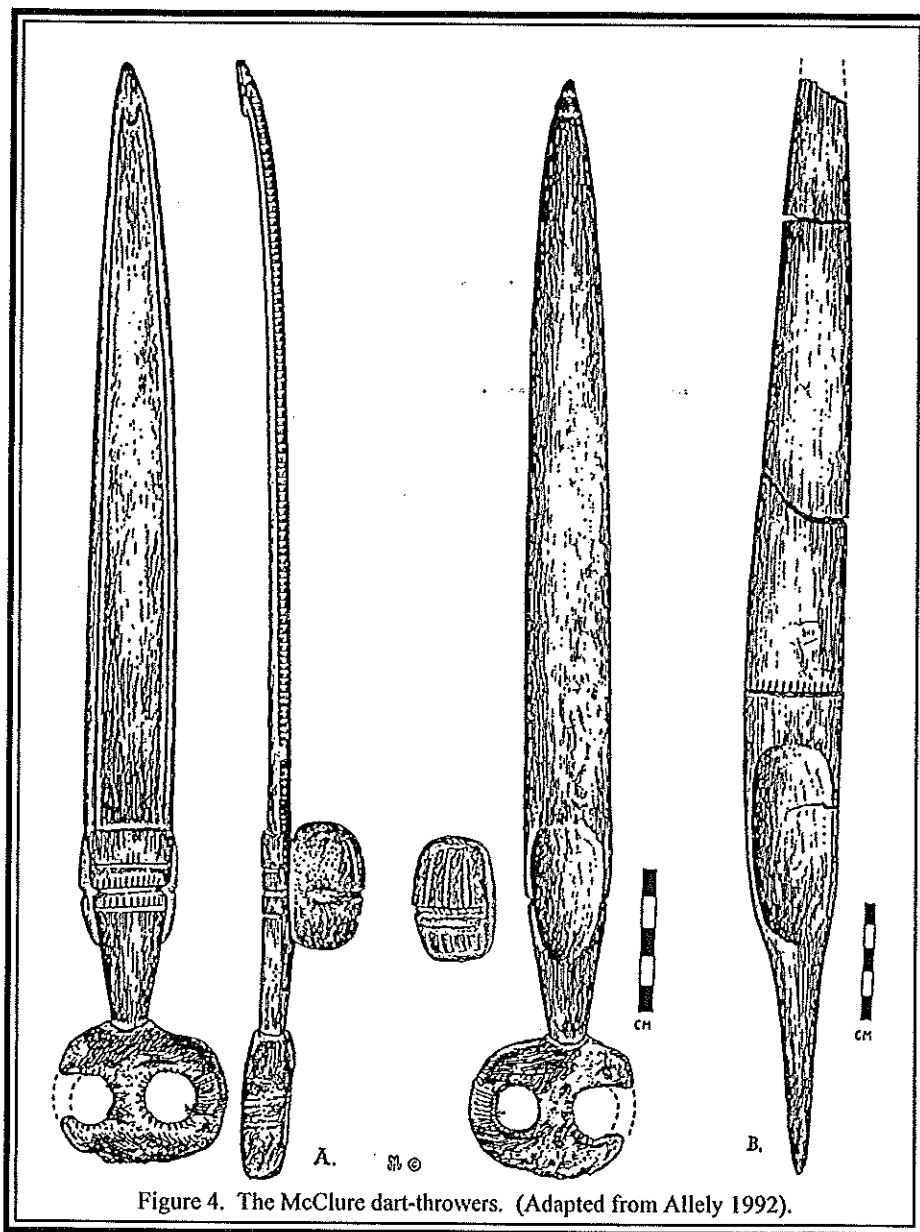


Figure 4. The McClure dart-throwers. (Adapted from Allely 1992).

Literature Cited

Allely, Steve
1992 Great Basin Atlatl: Notes From the N.W. Corner
Bulletin of Primitive Technology. 1(4):48-56.

Borden, Charles E.
1968-69 The Skagit River Atlatl: A Reappraisal. *B.C. Studies*. (1):
13-19.

Chandler, Graham
1998 Atlatl: The Ultimate Spear Accessory. *Equinox*.
17:2(98):19.

Cressman, Luther S.
1944 New Information on South Central Oregon Atlatls.
The Masterkey. 18(6):169-179.
1977 *Prehistory of the Far West*. University of Utah
Press, Salt Lake City.

Cressman, Luther S. and Alex Kreiger
1940 Atlatls and Associated Artifacts from South Central
Oregon. In *Early Man In Oregon: Archaeological
Studies in the Northern Great Basin*, edited by L. S.
Cressman, Howel Williams, Alex Kreiger, pp. 16-
52. Eugene.

Fladmark, Knut R.
1986 *British Columbia Prehistory*. Archaeological
Survey of Canada, Ottawa.

Fladmark, Knut R., D. E. Nelson, T. A. Brown, J. S. Vogel, and J.
R. Southon
1987 AMS Dating of Two Wooden Artifacts from the
Northwest Coast. *Canadian Journal of
Archaeology*. 11:1-12.

Hutchings, W. Karl and Lorenz W. Bruchert
1997 Spearthrower Performance: Ethnographic and
Experimental Research. *Antiquity*. 71(1997):890-
897.

Moss, Madonna L. and Jon M. Erlandson
1995 Reflections on North American Pacific Coast
Prehistory. *Journal of World Prehistory*. 9(1):1-45.

Pettigrew, Richard M.
1990 Prehistory of the Lower Columbia and Willamette
Valley. In *Northwest Coast*, edited by Wayne
Shuttles, pp. 518-529. Handbook of North
American Indians, Vol. 7, William G. Sturtevant,
General Editor. Smithsonian Institution,
Washington, D. C.

Phebus, George E. and Robert M. Drucker
1979 *Archaeological Investigations at Seaside, Oregon*.
Seaside Museum and Historical Society, Seaside.

Sauter, J. and B. Johnson
1974 *Tillamook Indians*. Binfords and Mort, Portland.

Spaulding, K. A.
1969 *On the Oregon Trail: Robert Stuart's Journey of
Discovery*. University of Oklahoma Press, Norman.

Strong, Emory
1966 The McClure Atlatls. *Screenings*. 15(5):1-4.

Taylor, Herbert C. and Warren Caldwell
1954 Carved Atlatl from Northwest Coast. *American
Antiquity*. 19(3):279-280.

ON TARGET

by Leni Clubb



Many of you may not be aware that we have two membership categories other than Individual and Family. They are: Supporting - \$50.00, and Contributing - \$100.00. These kind of memberships help support our organization and help keep the Individual and Family membership fees down to \$10.00 and \$15.00. Additionally, we have awarded four Fellowship Awards (Life memberships) and have one Exchange and two Honorary Memberships.

Please check your expiration date in the upper right hand corner of your newsletter to avoid receiving reminders that your dues are due or that your membership is about to expire. I know that you hate to get those green or yellow inserts in the newsletter. (I hate to have to put them in!) But, I am sure you realize that we cannot continue to send out the newsletters to persons whose membership has expired. Postage and printing are our biggest expenses.

At the last update of the atlatl contests on Dean Pritchard's web site, there are 49 contests scheduled in the United States, and 18 more in Europe. These dates will also be in the calendar of this April newsletter. You will probably find one in your area that you can attend, as they are widely scattered over the U.S. and Europe. If you are on the Internet, you can keep track of all the contests on Dean's web site at: <http://netnow.micron.net/~atlatl>.

My e-mail address is leniwaa@inreach.com, phone number is (760) 358-7835, or you can reach me via US Mail at P.O. Box 56, Ocotillo, California 92259.

not properly published?

NEW UTAH EVENT – BLANDING HOSTS 1999 ATLATL COMPETITION

by Deborah Stevenson

Blanding, UT – For the first time ever, the World Atlatl Association has been invited to a competition in beautiful, Blanding, Utah located in the Four Corners Region, 1 ½ hours drive south of Moab. The competition will be held on Saturday, May 8th 1999 from 9 a.m. until 6 p.m. at the San Juan High School football field.

For early arrivals, Paul Mantz will present a free program on Friday evening at 7 p.m. at Edge of the Cedars State Park Museum, titled "Primitive Archery: Making Bows and Arrows." Related primitive skills demonstrations will be held all day Saturday at Edge of the Cedars, which is located at 660 West, 400 North, about one mile from the high school. A group campsite has been reserved for members of WAA from May 7-9, 1999 at Sand Island Recreation area, a half hour's drive south near the town of Bluff. Sand Island is the site of a famous petroglyph panel featuring numerous Kokopelli or fluteplayer figures. This Bureau of Land Management campground is near the San Juan River and has plenty of cottonwoods for shade.

Both the European and International Standard Accuracy Contest (ISAC) will be held at no cost to participants. Everyone is welcome and encouraged to attend. To register, contact WAA Secretary, Leni Clubb at (760) 358-7835, or e-mail her at Leniwaa@inreach.com.

Blanding is known as the "Gateway to Adventure," with Edge of the Cedars Museum listed as the first stop on the "Trails of the Ancients" self-guided auto tour, which includes Natural Bridges, Valley of the Gods, and Hovenweep National Monument. There are prehistoric ruins and great hiking opportunities nearby. To receive a free San Juan County Visitor's Guide with information about restaurants, motels, camping and recreation, plus maps of the area, call 1 800-574-4386.

Edge of the Cedars is known for its outstanding collection of prehistoric Puebloan pottery, rock art reproductions, and authentic ruin. This State Park museum is located at 660 West, 400 North, in Blanding. Regular museum and park hours are from 9 a.m. to 5 p.m. daily including Sundays. A nominal fee is charged for viewing the museum and ruins. For information contact Deborah Stevenson, Curator of Education or Mike Nelson, Park Manager at (435) 678-2238.

OK you atlatlers, this is a wonderful opportunity to see one of America's most colorful natural playgrounds. Southern Utah beckons with promises of a memory-filled vacation. Let's all meet at Blanding. Ed. comment.

WAA Being Asked to Help Sponsor Project Atlatl Wapiti

Members of the Board of Directors recently received a letter from Ken Wee, noted Colorado area Primitive Technologist and long time WAA member, requesting our assistance in a special experimental archaeology project he calls "Project Atlatl Wapiti". Quoting from the letter, Ken says:

"I hope to hunt Rocky Mountain elk with an atlatl in Colorado. This attempt to harvest an elk with an atlatl and dart will test my theory that as the prey of the primitive hunter-gatherer began to lean toward smaller, swifter animals from larger, slower ones, hunting weapons and techniques were adapted to accommodate such changes. A new hunting strategy had to be devised in the pursuit of moose, elk, deer and antelope as compared to wooly mammoth, mastodon and *bison antiquus*. The ability to get within effective range, the size of the kill zone of the quarry, the reaction time of the prey, the openness or denseness of the hunting terrain, the need to balance stealth, accuracy, speed, and penetration of projectiles were all factors which led to the development and adoption of the atlatl over a hand thrown or thrusting spear and later of the bow and arrow over the atlatl."

"In addition to the hunting phase of the project, I propose to plant, nurture, and harvest a Native American garden of beans, corn, squash, pumpkins, and other native plants to supplement a "Neanderthal" or "Paleolithic" diet of venison, bison, elk, fish and local wild edible plants."

"Wherever feasible, the hunting weapons, gardening tools and implements for processing game animals will be constructed of natural and native materials, utilizing stone age tools and processes. Old strains of native plant seeds that are compatible for this growing zone will be used. A detailed record of the project including photo-documentation will be kept. The results of Project Atlatl Wapiti will be disseminated through a variety of primitive technology and outdoor magazines."

"...Colorado does not recognize the atlatl as a valid hunting weapon, ... nor are stone, bone and antler legal as arrow points during the archery season. In order to circumvent this law, and to legally hunt with a stone-tipped atlatl dart, I was advised by the Colorado Division of Wildlife to apply for a scientific collection permit. ...Applicants hoping to receive such a permit must first meet their criteria and submit the requested information."

The required material to be submitted is: 1. Detailed plan of project including goals, methods and location of collection. 2. Affirmation that a comprehensive literature search has yielded no similar project already completed and documented. 3. Recommendations from several established, reputable scientific organizations. 4. Payment of a small non-refundable application fee.

"Through field studies on live animals, I will be able to gather data that reinforces or disproves a hypothesis that form follows function in weapons systems. Heavy, slower moving projectiles are more effective on big game such as mastodon than are lighter ones. Lighter, faster darts at medium range on animals with fast reaction times is another effective strategy for atlatl launched projectiles. A comparative study of the merits, advantages and disadvantages of an atlatl-dart weapon system to a bow and arrow weapon system can be done with data collected from this study."

"...where a quick, humane kill cannot be made, no dart will be released. All efforts will be made to quickly dispatch a wounded animal. ...I am an experienced hunter (and) atlatlist, (and through) experimentation with different atlatls and darts,...attempt to further understand and excel with this hunting tool."

ATLATL EVENTS AROUND THE WORLD - 1999

March	6	Finger Freezing ISAC, Ligonier, PA. Contact Chuck Butorajac (724) 238-6878.
March	20	Fannettsburg, Fort Loudon, PA, Local and ISAC. Contact Terry Keefer (717) 349-2262 or tkeefe@cvn.net
March	20-21	European Championships at Les Eyzies, France. Contact Pierre Matheus.*
April	3-4	Second Annual April Fool's Atlatl Throw, Arvada, CO. Contact Charlie Brown (303) 421-0035 or sazi@prodigy.net
April	7-11	3rd Annual North Georgia Knap-in with Atlatl Range. Test Your Skill! Contact Mark Bracken (770) 345-7305.
April	10	Give Me a Brake ISAC, Ligonier, PA. Contact Chuck Butorajac (724) 238-6878.
April	11	Michigan Flintknappers Gathering at Noon. Chelsea Rod & Gun Club, Chelsea, MI. MAA style tournament with ISAC. Contact Jim Gilligan (810) 231-2314 or atlatl@tir.com
April	16-19	Ninth Annual Atlatl Contest at Valley of Fire State Park, Overton, Nevada. Contact Leni Clubb (760) 358-7835 or jeniwa@inreach.com
April	18	ISAC in Belgium. Froidchapelle East Forest especially for Pascal and his friends. Contact Pascal Chauvaux atlatl@skynet.be
April	24	Earth Day Gathering & Mastodon Open plus ISAC at Waverly, NY. Contact Jack Roe (507) 888-8258 or Bob Berg (607) 687-4064.
April	24-25	European Championships at Ramioul, Belgium. Contact Pierre Matheus.*
May	1	Annual Idaho State Open Atlatl Competition (held in conjunction with Idaho Archaeology Week) at Celebration Park near Melba, ID. Contact Tom Bicak (202) 495-2745, or Dean Pritchard (208) 323-0293 or atlatl@micron.net
May	1	Second Annual Gathering of Atlatlists, Turbotville, PA, Local and ISAC. Contact Gary Fogelman (570) 437-3698
May	1-2	Indian Creek Archery (and Atlatl) Rendezvous, Pawhuska, OK. Contact Dale or Norma Pinney (918) 287-4585 for rendezvous information, and Ray Madden (417) 781-0962 for atlatl events.
May	2	Chelsea Rod & Gun Club 3-D Shoot (Field points only please) at Chelsea, MI. 8:00 a.m. to 4:00 p.m. Contact Jim Gilligan (810) 231-2314 or atlatl@tir.com
May	8	Edge of Cedars State Park Atlatl Contest, (Utah Prehistory Week) Blanding, UT. Contact Deborah Stevenson (435) 678-2238 or d Stevenson1@hotmail.com or Leni Clubb (760) 358-7835 or jeniwa@inreach.com
May	8	Primitive Skills Get-together and Atlatl Contest, Greeley, Colorado. Contact Mike Foltmer (970) 339-5608.
May	14-15	Fort Osage Knap-in and Atlatl Competition, Fort Osage National Historic Landmark, MO. Contact Ron Mertz (314) 822-2514.
May	15	Nichols/Tioga Center River Fest, Nichols/Tioga Center, NY. Contact Bob Berg (607) 687-4064
May	16	Great Lakes Primitives Spring Gathering, Hesperia, MI. MAA style tournament and ISAC. Contact Jim Gilligan (810) 231-2314.
May	16	Local Atlatl Contest and ISAC, Candor, NY. Contact Bob Berg (607) 687-4064
May	21-23	No Name Rendezvous at Ahlman's 2 miles north Morristown, MN. Contact Skip Edwards (507) 625-3352 or Jerry Schaefer (507) 243-3300.
May	29	Pennsylvania Spring Fling ISAC, Ligonier, PA. Contact Chuck Butorajac (724) 238-6878.
May	29	Mastodon State Park, Jefferson County, MO. Atlatl and other primitive events with ISAC. Contact Ron Mertz (314) 822-2514.
May	29-30	European Championships at Crepy-en-Valois, France. Contact Pierre Matheus.*
May	29-31	Atlatl Marathon at Wilder Creek Conservation Club, Marshall, MI. Saturday May 29, 10: a.m. European Tournament with ISAC to follow. Sunday, May 30 th , 9:00 a.m. The "Double Tripple" European Round, 3-D round plus ISAC, followed by European round, 3-D round and MAA contest (142 throws total). Monday, May 31 st , 9:00 a.m. Michigan Atlatl Association Tournament with ISAC. Contact Jim Gilligan, (810) 231-2314 atlatl@tir.com
June	4-6	Foothill Mountain Atlatl Invitational at Curt Gowdy State Park, Cheyenne, WY. Atlatl Competitions, including ISAC, plus Bow and arrow. Contact Regina Dodson (307) 632-0766, or Wyowinds@aol.com
June	5-6	European Championships at Solutre, France. Contact Pierre Matheus.*
June	5-6	Local Contest ISAC, and Flintknapping, Angelica, NY. Contact Bob Berg (607) 687-4064.
June	5-6	Ohio Atlatl Association Competition at Flint Ridge, Ohio. WAA ISAC and OAA Standard Accuracy both days at 11:00 a.m. Contact Ray Strischek (740) 592-3465 or 592-1217, or Jim Kingery 1-800-600-7178.
June	6	Chelsea Rod & Gun Club 3-D Shoot. (Field points only please.) At Chelsea, MI. Contact Jim Gilligan (810) 231-2314 or atlatl@tir.com
June	12-13	European Championships at Nemours, France. Contact Pierre Matheus.*
June	18-19	Atlatl Contest and Flintknapping Event, Glimmer kGlass State Park, Cooperstown, NY. Contact Bob Berg (607) 687-4064.
June	18-20	Fremont Indian State Park Annual Atlatl Contest and ISAC, Sat. the 19th, Sevier, UT. Contact Pete Weimer (435) 527-4631.
June	26	Michigan Outdoor Survival School (MOSS) Milkado, MI at 4:00 p.m. Stand alone ISAC. Contact Jim Gilligan (810) 231-2314 or atlatl@tir.com or Jim Miller MOSS Director (517) 736-3487.
June	26-27	European Championships at Saulges France. Contact Pierre Matheus.*
June	26-27	World Atlatl Open, Fort Caspar, Museum, Casper, WY. Expect: American Field Round, Golf Round, ISAC and Hunting-type atlatl contests with craft fair and primitive skills demonstrations. Contact Ranger Rick Young at (307) 421-8462.
July	3-4	Atlatl Contest with ISAC & Flintknapping, 90 Main St. Candor, NY. Contact Bob Berg (607) 687-4064.
July	3-4	European Championship plus ISAC, Lago Della Montagna Spaccata (Broken Mountains Lake) Abruzzo national Park, Italy, Contact Bruno Morucci arca@fivenet.com , Or Pierre Matheus.* NOTE: This is a change from previously published dates.
July	4	Atlatl Demonstrations, Flint Knapping and other Primitive Skills Exhibitions plus local Atlatl Contest and ISAC at Candor, NY. Contact Bob Berg (607) 9065 or 1-800-836-4520.
July	9-10	Aurora Spear Sling Fling Thing, Aurora History Museum, Aurora, Colorado. Contact Bill Tate (303) 755-5591 or atlatl@mho.net .
July	10-11	Keefer Klan Atlatl Competition, Fannettsburg, Fort Loudon, PA. Contact Sharon Keefer (717) 349-2262 or tkeefe@cvn.net
July	11	Chelsea Rod & Gun Club 3-D Shoot. (Field points only please) 8:00 a.m. to 4:00 p.m. Chelsea, MI. Contact Jim Gilligan (810) 231-2314 or atlatl@tir.com
July	17-18	Montana Mammoth Hunt, Montana City, MT. Contact Troy Helmick (406) 266-3398, or Jim Ray (406) 736-5274.
July	17-18	European Championships at Mauvesin, France. Contact Pierre Matheus.*
July	17	Alder Acres Atlatl Tournament, Lorraine, NY. Contact Rodger Klindt (315) 639-6293 or mammothdoc@juno.com
July	24-25	French Creek Artifact Show and Atlatl Tournament, Saegerstown, PA. Local and ISACs. Contact Gary Fogelman (570) 437-3698 or John (814) 398-4814.
July	24-25	European Championships at Tarascon, France. Contact Pierre Matheus.*
July	24-25	Platte River Primitive Skills Rendezvous at Douglas, WY. Atlatl competitions with ISAC, plus primitive bow and arrow and other activities. Contact Michael O'Meagher (307) 358-0155 or doearth@coffey.com
July 31 - Aug.	1	Illinois Atlatl Association International Competition - Franklin Grove Summer Harvest Festival at Chaplin Creek Historic Village, Franklin Grove IL. Contact Don Asp (815) 734-6905.

- July 31 - Aug. 1 European Championships at Le Mas d'Azil, France. Contact Pierre Matheus.*
- Aug. 1 Chelsea Rod & Gun Club 3-D Shoot (Field Points only please) 8:00 a.m. to 4:00 p.m. at Chelsea, MI. Contact Jim Gilligan (810) 231-2314 or atlatl@tir.com
- Aug. 7 Lapeer Sportsman's Club at Noon in Lapeer, MI. MAA style tournament with ISAC. Contact Jim Gilligan (810) 231-2314 or atlatl@tir.com
- Aug. 7-8 European Championships at Tautavel, France. Contact Pierre Matheus.*
- Aug. 14-15 European Championships at Zug, Switzerland. Contact Pierre Matheus.*
- Aug. 20-21 Great Lakes Primitives Summer Gathering, 3:00p.m. on Bois Blanc Island, MI. MAA style tournament with ISAC first day and European Contest with ISAC second day. Contact Jim Gilligan (810) 231-2314 or atlatl@tir.com
- Aug. 21-22 European Championships at Beaune, France. Contact Pierre Matheus.*
- Aug. 28-29 Stone Tool Technology Show, Letchworth State Park, Castile, NY. Contact Bob Berg (607) 687-4064.
- Aug. 28-29 Ahlman's Shooters Round-up at Ahlman's 2 miles north of Morristown, MN - Note, Big Red will be there. Contact Dale Torma (218) 865-7049.
- Sep. 4-5 Ohio Atlatl Association Competition at Flint Ridge, Ohio. WAA ISAC and OAA Standard Accuracy contests both days from 11:00 a.m. Contact Ray Strischek (740) 592-3465 or 592-1217, or Jim Kingery 1-800-600-7178.
- Sep. 4-5 European Championships at Oerlinghausen, Germany. Contact Pierre Matheus.*
- Sep. 10-12 Old Fort Madison Trade Fair on Historic Riverview Park, Fort Madison, IA. In addition to atlatl competitions, tests of skill with bow and arrow, hawk, knife, and lance plus much more. Contact Wayne Hagmeier (319) 463-7367.
- Sep. 11 Chelsea Rod & Gun Club 3-D shoot. (Field points only please). 8:00 a.m. to 4:00 p.m. at Chelsea, MI. Contact Jim Gilligan (810) 231-2314 or atlatl@tir.com
- Sep. 11-12 World Atlatl Association 12th Annual Meeting and Atlatl Contests, Cahokia Mounds State Historic Site, Collinsville, IL. Contact Ron Mertz (314) 822-2514.
- Sep. 11-12 European Championships at Altamira, Spain. Contact Pierre Matheus.*
- Sep. 17-18 Fort Osage Knap-in and Atlatl Competition, Fort Osage National Historic Landmark, Missouri. Contact Ron Mertz (314) 822-2514.
- Sep. 18-19 Pennsylvania Championship and Deer Hunt, Naugle's Game Farm 1 1/2 miles east of Rt. 219 on Rt. 30. Contact Chuck Butorajac (724) 238-6878.
- Sep. 18-19 European Championships at Samara, France. Contact Pierre Matheus.*
- Sep. 24-26 Bois D'arc Rendezvous south of Joplin, MO. Contact Ray Madden (417) 718-0962.
- Sep. 26 Chelsea Rod & Gun Club 3-D Shoot. (Field Points only please) 8:00 a.m. to 4:00 p.m. at Chelsea, MI Contact Jim Gilligan (810) 231-2314 or atlatl@tir.com
- Oct. 9-10 European Championships at Langon France. Contact Pierre Matheus.*
- Nov. 6 Second Annual Indoor Icicle ISAC and local contest at Tioga Park, Nichols, NY. Contact Bob Berg (607) 687-9065 or 1-800-836-4520
- Nov. 6 1999 Michigan Atlatl Championship at Chelsea Rod & Gun Club, Chelsea, MI. This will include an intensive one day collection of contests open to everyone: 3-D course with 30 throws, European Tournament with 30 throws, MAA Tournament with 12 throws, and ISAC with 10 throws. Contact Jim Gilligan (810) 231-2314 or atlatl@tir.com

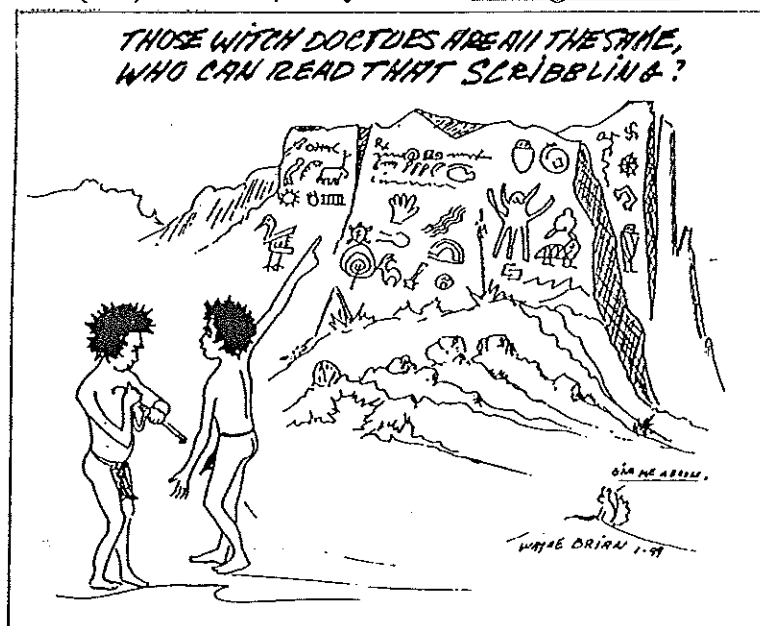
*Note, the new Secretary for European Championships is Pierre Matheus, rue Haie Delle Praye, 15, B4671 Saive, Belgium, Telephone (32) 43 62 14 14. Our previous contact, Pascal Chauvaux, Rue Au dela de l'Eau, 3 B-5630, Cerfontaine, Belgium - Telephone: (32) 71 64 34 16 or atlatl@skynet.be can still be contacted for assistance as well.

Please send us dates of atlatl events for inclusion here, and keep submitting your reports, cartoons, and suggestions to us. Your editor can be reached by FAX at (303) 755-1145, or mail at 1390 S. Paris Court, Aurora, CO 80012, phone (303) 755-5591, or by e-mail: atlatl@mho.net

We regret any errors in the listing for Events Around The World, but occasionally we receive wrong or confusing information and sometimes we just plain make mistakes. Please help out your poor old editor, and proof-read submissions. Make sure that the event's date coincides with the days indicated, that you name the competition or event and include the location where people can find you. Give a good phone number and the event's contact person's name. If what you are submitting is a correction, please so state. Everyone will be happier if you follow these instructions.

NEW GROUP FORMING ???

Don Asp, of 110 W. Front St., Mt Morris, IL 61054 is interested in forming an Illinois Atlatl Association. A meeting of interested individuals was called for Feb. 28th in Franklin Grove, IL. We have not heard the outcome, but area enthusiasts are urged to contact Don. His phone number is (815) 734-6905.



NEWS FROM PENNSYLVANIA

by Chuck Butorajac

The January 23rd Ligonier, PA Bundle-up And Throw ISAC was anything but. It turned out to be a warm 60 degrees with a moderate breeze. Eleven hardy throwers showed up willing to give it their best for this first attempt of the new year. Overheard were comments, such as, "I haven't thrown in weeks!" The competition consisted of three throws at each of five distances from 10 to 30 meters with slightly shorter distances for the women, plus ISAC. Best scores were: Danny Bard 108, Chuck Butorajac 96, and Paul Gleckl 84 for the men, and Sharon Keefer 85, Tasha Keefer 76, and Lori Majorsky 74 for the women. Only three ISAC scores were worth reporting : Gary Fogelman 90, Terry Keefer 85, and Sharon Keefer 50.

The Feb. 10th event titled: The 20 Degree Below Throw was held following a night of rain and actually reached a sunny 40 degrees by afternoon. Thirteen addicts from New York, Ohio and Pennsylvania threw their sticks into the air and some actually hit the target! It seems that Gary Fogelman is either getting senile or thinks he can use mental telepathy to will his spears to the target. He forgot his trusty atlatl and after adding a pebble-weight found in the creek to a spare atlatl borrowed from one of the other contestants, did manage a respectable day's throw—not great, but O.K. The top throwers were: Danny Bard 111, Don Roberts 105, Gary Fogelman 104, and 15 year old Doug Majorsky 101. The top two women's scores were Sharon Keefer 93, and Lori Majorsky 62. Top ISAC scores were Chuck Butorajac 87, Don Roberts 80, Terry Keefer 77, Danny Bard 73 and Gary Fogelman 71XX.

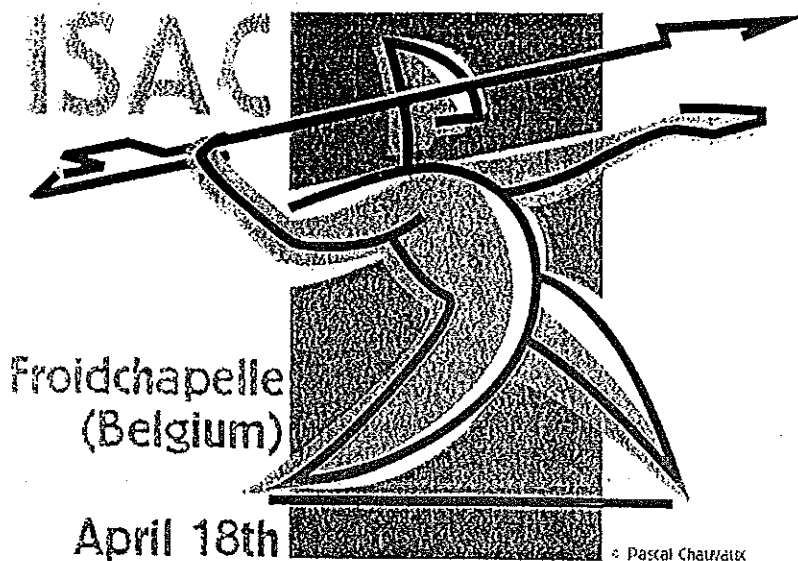
Because of the threat of 12 to 14 inches of new snow on top of the 10 inches already on the ground, the expected throwers from New York, Ohio, and Pennsylvania did not venture out for the March 6th, Finger Freezing ISAC Held in Ligonier, Pennsylvania. Four local throwers did show up, and we did throw. It was 35 degrees and we had snow, gusting winds, and 8 inches of slush on the range. The actual scores for this late winter competition aren't important, but Chuck Butorajac came in first, Paul Gleckl 2nd, and Doug Majorsky 3rd. Lori Majorsky was first in the women's division. The best ISAC thrower was 15 year old Doug Majorsky with a cool 75X. Doug is now making his own spears, has a "wicked" throw, and the potential to be ranked with the top throwers.

NOTE: Chuck Butorajac is compiling a list of reasons you missed the 10-ring in the ISAC. He is after your best excuses such as: "Like it was too cold." or "Too hot." or "There was too much noise." or "A bird flew over." etc. etc. Please send your lame excuses to: Chuck Butorajac, P. O. Box 533, Ligonier, PA 15658.

FROM EUROPE

Long time member, now Fellow in the World Atlatl Association, Pascal Chauvaux has worked up a great new web page. Members and other interested parties can find it at <http://users.skynet.be/sky38808/index.html>. You'll see some photos of the "gang of eight" that made it to France last year to compete with and meet our European friends, as well as information and photos on other, more recent competitions.

Below is a new Pascal logo – another class act!



The pictures below were sent to us from Italy by Bruno Morucci depicting Marcello Bacchi and his paleolithic ultimate secret weapon.



Notes from Here and There

We were saddened to hear of Dean Pritchard's heart attack and subsequent by-pass surgery on Saturday March 27th. We hear from Judy that "Dean came through the surgery with flying colors. He can wiggle everything and his brain is still as good as it was. When they took out the breathing tube, he wanted something to drink and a sandwich. They gave him ice chips. He said it tasted like cold beer."

You computer people know Dean through his web page: <http://netnow.micron.net/~atlatl>. For those who might want to send him a get well card, he can be reached at: 3974 Lena Ave., Boise, ID 83713.

WAA ANNUAL MEETING AT CAHOKIA MOUNDS - Sep. 11-12, 1999

Members should be planning their Autumn vacations with thoughts about the World Atlatl Association's Annual Meeting to be held in conjunction with what is now, an annual competition at Cahokia Mounds State Historic Site, Collinsville, IL, just across the river from St. Louis, MO. Located in the middle of the country, this will be an opportunity for eastern members to meet westerners who might not otherwise travel so far. The location of the contest is in the midst of this World Heritage Site - well worth visiting! Let's make this the biggest American atlatl competition ever! See "Atlatl Events Around the World - 1999" for contact information.

Letters Letters Letters Letters Letters

After putting this newsletter together now for over eleven years, it is nice to find out that someone is reading it. Your letters prove that. This was especially obvious upon receiving the following:

I found the Jan. 1999 issue of *The Atlatl* most interesting. There are several things I would like to comment on:

I would urge caution concerning exercise #4, the "Pull Down" exercise mentioned in Lou Becker's article. Some 40 years after having performed said exercise on a regular basis, I find that I have damaged rotator cuffs in both shoulders, and cannot even sleep on my side without experiencing pain....

On Courtney Birkett's article on atlatl lengths, somewhere in my readings, the ratio of dart length to atlatl length was given as being Pi to one, i.e., the dart should be 3.14159 times the length of the atlatl. In the real world, I make my darts 58 inches long because they fit nicely in the bed of my pickup truck. Dividing 58 by 3.14, I get a theoretical atlatl length of 18.5 which I take to be the distance between the middle of my grip and the spur, a length that compares nicely to Courtney's conclusions and some anthropological data that seems to say between 18 and 24 inches

are typical atlatl lengths. Finally, one's physical condition would be of significance. A baseball pitcher could probably be very competent with a longer atlatl. In my case, I seem to be having better success with the shorter lengths. (Probably because of too many "pull downs" during my younger years.)

Ray Strischek's article on spurs was very helpful (Has Ray ever written an article that wasn't?) and I immediately took my atlatl to a belt sander and reconfigured the spur's trailing surface which did improve performance.

Thanks again for such an informative issue. Happy mammoth hunting to all,

L. H. Garlinghouse, Pocahontas, Arkansas

My brother, Russell Richard and I will be hosting the first annual "Foothill Mountain Atlatl Invitational" at Curt Gowdy State Park, Cheyenne, Wyoming on June 4, 5, and 6, 1999. The competitions will include atlatl, ISAC, and bows. Hope you will come and join us. We're hoping for a good turnout, and are planning some special fun and competitions. For further information, contact Russell Richard at (307) 772-0550, or Regina Dodson (307) 632-0766 or Wyowinds@aol.com.

Regina

Hi there, Ray Strischek here db8947@dragonbbs.com. Yesterday I got an e-mail from someone who had received a copy of *The Dart* (3/99) issue, saw the mammoth picture there and my request that someone with an overhead projector blow the mammoth up into a large target for the Sep. 99 Ohio Atlatl Contest at Flint Ridge, Ohio.

I was so happy reading about how this person had an overhead projector and wanted to know if I still wanted someone to make the target, that I said to myself, "Hot damn, I got to print this thing," and hit the delete button instead. AAAUUUGGHH!

I can't even remember who sent the e-mail, let alone what the e-mail address was. If you know who it was or hear someone muttering, "That damn Strischek, I sent him an e-mail and he never got back to me." Tell him (or her, it could have been a her) that I am soooooo sorry, you can't believe how stupid I feel... Please, please contact me again. Give a dummy a second chance, please. Ray Strischek, 10810 Peach Ridge Rd., Athens, OH 45701 - Ph. (740) 592-3465 nights.

From our friends among the boomerang throwers, through Ted Bailey comes the following report:

I was looking at the atlatl site and I have trouble believing what I am seeing - that a lot of the energy of the dart comes from its own springiness. But the pictures are right there. They clearly show that long dart flexing upon release about as much as you'd flex a bow to string it. With that much distortion on the actual "arrow", I can't imagine it is very accurate. I thought the advantage simply came from having a much longer lever arm from which to launch the spear. Perhaps the trick to hunting with an atlatl doesn't lie in hitting a precise bullseye, but the idea is to hit the victim and let the tremendous force of the dart skewer and pin said victim to whatever happens to be behind it. That way, you can just walk up and conk it with your hunting "boom" (boomerang) - provided it's not a millennium-old relic from Florida.

Now, before you alert readers write me several kilos of hate mail, telling me how the atlatl is so accurate that Indonesian milk maids can thread needles from a hundred meters, and how the atlatl is the official hunting weapon of Rhode Island, let me tell you that I can't hit the sidewalk with a can of paint.

Since most well designed "booms" don't have the flex of the atlatl dart, I would design a boomerang atlatl more like a pair of nunchaku (for those who've never actually seen the word written, that's "numchucks", having a joint being limited to a single direction. Nunchaku develop their

devastating power by multiplying the centripetal forces involved. Not only is the lever that makes up the arm now longer, the additional length is spinning compoundly. What ends up happening is that the velocity of the tip of the weapon is far greater than the velocity of the hand that wields it. Plug that into your conservation of momentum equations and you'll see how the masters can split whole watermelons so easily using nunchaku.

The JimboLouis Labs prototype AtlatlBoom launcher would of course, launch a two bladed boomerang of the "Aussie" round or distance sort. A peg would go clear through the boomerang near the tip of one of the arms. This peg would be engaged by a claw at the end of the launcher which would retract or release when the swinging part of the launcher reached its apex. The launcher also would have a limiter on the joint so it locks at the apex, giving the "boom" that all too important snap at the end.

I could post a diagram on the web, but it's patent pending proprietary, JimboLouis Labs technology, and we all know what happened the last time we unleashed cutting edge technology on the world - not a whole lot.

Jimbo

FREMONT INDIAN STATE PARK, UTAH

by Charlie Brown

One of the finest atlatl tournaments in the country is held every year at Fremont Indian State Park on Five Fingers Ridge near Sevier, Utah. This is the site of some spectacular rock art, and the location of one of the largest Fremont Indian Villages found to date. Prehistoric people lived, played, and hunted in this area between A. D. 350 and 1385.

Assistant Park Manager, Pete Weimer, and his "gang" have constructed the most challenging atlatl course in the Western United States—maybe anywhere, and in addition, present winners with beautiful, uniquely-crafted awards. Last year's winners were:

Age 10 and under (highest score wins)

Tanner Weimer	UT	36
Tiffany Weimer	UT	32
Spencer Chatland	UT	21

Youth - age 11 through 15 (Lowest score wins)

Alex Pritchard	ID	23
Dallan Simmons	UT	39
Mariah Ellsworth	UT	32

Women

Tamara Cameron	ID	37
Judy Pritchard	ID	39
Susie Brown	CO	46

Men

Charlie Brown	CO	28
Dean Pritchard	ID	29
Jeff McGill	UT	29

WAA Grand Champion was Charlie Brown.

This year's tournament will be held June 18th and 19th. See you all there.

PLATTE RIVER PRIMITIVE SKILLS RENDEZVOUS DOUGLAS CUP COMPETITION DOUGLAS ATLATL & PRIMITIVE BOW CONTEST

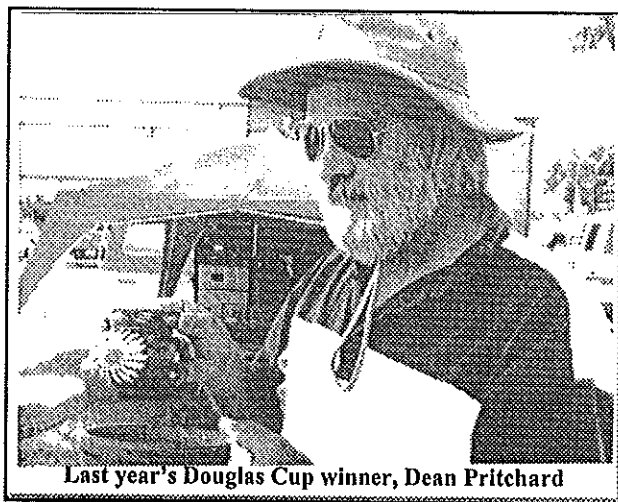
By Michael Omeagher

Another not-to-be-missed western event is the Platte River Primitive Skills Rendezvous at the Wyoming Pioneer Museum located on the State Fair Grounds in Douglas Wyoming. Registration is \$3.00 per event or \$12.00 for the entire weekend. The event will take place July 23 - 25, with set up, practice, and public demonstrations scheduled for Friday, the 23rd. Saturday morning practice continues with the competitions beginning at about noon. Talks and demonstrations on various subjects from Flint Knapping by Bob Patten; Medicinal Plants, Brenda Michaelis; Brain Tanning, Mike Foltmer; Children's activities, Andie Fink; Primitive tools, Diane O'Meagher, to Primitive Bow and Fire Making by Ken Wee. Among the awards to be given will be the Douglas Cup (see below). ISAC and American Field Rounds will be held. Contact Michael O'Meagher (307) 358-0155 or e-mail doearth@coffey.com for more information.

The Douglas Cup

by Ken Wee

During the height of the Aztec Empire, a drink was concocted from the cocoa bean and considered to be the "nectar of the gods." Usually reserved for royalty, or the very wealthy, this cocoa-related drink was offered to brave warriors or triumphant athletes on special occasions. In keeping with the tradition of this culture which brought us the word "atlatl," the Douglas Cup was born. Whosoever shall casteth yon highest marks in yon atlatl games shall be proclaimed yon winner, and "la Grande Cham-peena" or "el



Last year's Douglas Cup winner, Dean Pritchard

Overheard at a recent atlatl competition: "I started out with nothing...and I still have most of it."

Cham-peeno" and earneth the right and honor to drinketh chocolate milk (or other desired beverage) from yon Douglas Cup.

At last year's ceremony, following the traditional eating of fig newtons to induce thirst, the O'Meaghers presented a ceramic Douglas Cup to "el Grande Cham-peeno," Dean Pritchard of Boise Idaho. Along with this honor comes the responsibility of making finding, purchasing or otherwise procuring a new Douglas Cup for the next year's winner.

Fort Loudon Atlatl Competition

by Terry Keefer

February 20th at Fort Loudon, Fannettsburg, PA turned out to be a bright sunny day with 17 participants competing in both a European style contest and ISAC. Many drove over two hours, with the longest trip made by Dana and Kay (Inman) Klein, just married on Valentine's Day. They came all the way from Belfast, NY over 6 hours away! The spectator response was unbelievable, due to the recent article in the *Indian Artifact Magazine* by Gary Fogelman. The European event included a walk of over a mile through the woods shooting at the various targets.

Top ISAC Scorers were:

Terry Keefer	PA	84
Gary Fogelman	PA	82X
Don Roberts	OH	77
Danny Bard	PA	77
Chuck Burorajac	PA	73
Jeremy Bard	PA	66
Dana Klein	NY	59

Top European style scores:

Denny Bard	PA	37.50
Don Roberts	OH	32.12
Terry Keefer	PA	27.86
Chuck Butorajac	PA	22.82
Gary Fogelman	PA	19.20
Paul Gleckl	PA	12.80

The Grand Champlion Award went to Denny Bard.

Dear Charlie,

I am a WAA member and I have been researching Magdalenian culture for the last two years. My particular interest is in the artifacts known as pierced staves or batons de commandment, and I have a theory about their possible utility. It would be very useful to my research to get a firsthand look at some of these batons, as I have seen them only in pictures.

I was therefore quite excited to read about your trip to Mas d'Azil and your visit to the museum there. Does the collection include a fair number of batons? It sounds as if Monsieur Alteirac is a very accommodating gentleman.

Does he speak English? Does he have an e-mail address? I would like to avail myself of the connection you have established and would be delighted to make a contribution to the museum lighting fund in the process. If the curator were amenable, I would like to visit the museum as soon as possible and I'd bring an interpreter if necessary. Do you think it would be worth the trip?

Sincerely, Chris Kilgore

(Ed. comment: I don't know how President Charlie Brown answered, but I can imagine it was, "YES! By all means, go.")

The above leads me to a reminder to send any money collected for the Museum Lighting Fund, addressed to MLF, WAA Treasurer Heidi Daetwyler, P. O. Box 1633, Dillon Colorado 80435.

LET'S HELP FRANK

Your Editor received the following e-mail from Frank ? at FNA125@aol.com :

In the second volume of *The Traditional Bowyers Bible*, there is a photo of an atlatl that has a cord, which ostensibly is wrapped around the dart while connected to the atlatl. According to the text, this imparts a spin (?) to the dart and increases the impact and flight stability. In all the stuff I've read about the atlatl, I've never seen this arrangement described. Is this for real, and if so, how does it work? Is it effective?

PENNSYLVANIA STATE CHAMPIONSHIP & DEER HUNT - SEPTEMBER 18-19

by Chuck Buktoraajac

The Pennsylvania State Atlatl Championship will be held at Naugle's Game Farm, located 1 1/2 miles east of Rt. 219 on Rt. 30. Two white tailed deer will be hunted with the atlatl on Saturday Sep. 18th. No hunting license is required. Everyone that hunts will get a share of the meat. Cost of the hunt is \$25.00 per person. I must have your check for that amount by July 1, 1999.

There is plenty of room for camping, a lake for swimming, outhouses, cold showers, and camp fires. Come in on Friday, the 17th to set up camp.

An ISAC and the PA Championship will be thrown Saturday and Sunday, with ongoing competition for those who do not hunt. The business meeting of the PA. Atlatl Assn. will be held on Saturday evening. Contact Chuck Butorajac at P. O. Box 533, Ligonier, PA 15658, phone (724) 238-6878.

A day without sunshine is like a day in Seattle.

Living on Earth is expensive, but it does include a free trip around the sun each year. Richard Valverde

EARLY ISAC RESULTS

by Lloyd Pine

We are receiving some high scores for so early in the year. Gary Fogelman has thrown a 90 to set a very high standard. Chuck Butorajac scored his personal best with 87, and Sharon Keefer leads the women with a 50. Fifteen year old Doug Majorsky has scored a very impressive 75X.

Attention Contest Organizers

NEW ADDRESS FOR MAILING ISAC REPORTS: After April 15th please mail communications pertaining to ISAC to Lloyd Pine, 1440 Ormandy, Baton Rouge, LA 70808. My telephone number should remain the same: (225) 926-5785.

From a Christmas greeting received from Ron Mertz and Pam Devoe, but appropriate at any time:

May the days be clear
And the breezes light,
May all your darts fly straight
And friendships burn bright.

An article in the March 1999 issue of the *Society for American Archaeology Bulletin* titled "Singing Spears," by John Palter quotes Ray Strischek extensively. The paper discusses recent evidence on flexible shaft spear throwers, and examines measurements made by Ray on modern ISAC equipment.

BOOMERANG AUCTION

Boomerangers, take note: The Spring 1999 Boomerang Auction, selling 200 'rangs, throwsticks and related items, is underway. Final bids on these items must be in by April 15th. A full description of all auction items with color photographs and bidding instructions can be found on the net at :

<http://users.aol.com/tbrang2/auction.html>

The World Open

Fort Caspar Museum, home to the World Open Atlatl Contest sent us the following schedule for their June 26 and 27 weekend events.:

In conjunction with the atlatl contest, Fort Caspar is hosting the Mountain Man Rendezvous and Primitive Skills contest. We also plan to feature a craft fair, historic demonstrations and a band for Saturday night. Dinner Saturday night is provided to all participants.

The weekend will also feature contests with tomahawk, knife, spear, and primitive archery. Specific rules are being processed and will be mailed to last year's participants. Anyone else wishing to obtain rules prior to these five contests can call (307) 235-8462 or write: Fort Caspar Museum, 4001 Fort Caspar Road, Casper, WY 82604.

As last year, we plan to offer lots of opportunities to test your atlatl skills, including an "accuracy" round, an American Field Round, a "golf" round and opportunities to post ISAC scores.

Richard L. Young, Museum Director

MAKIN' THE NEWS

Bill Tate

Jim Gilligan of Michigan has been back in the news. First, he was featured in the September 1998 issue of *Woods-n-Water News*, Michigan's premier outdoor publication. The multi-page article by Tom Lounsbury gave a good history of the atlatl weapon system and some atlatl tales that were new to me. (Never before have I heard the story of a Spanish conquistador who was struck by an atlatl dart through his armored left leg. The dart then made a total penetration of the horse he was riding and on into his other leg. Helplessly trapped, he was left to a gruesome fate at the hands of his Aztec enemy. Wow!) Jim, I bet you helped him along with that story.

Jim's second interview appeared in a feature article by Annemarie Schultz in the Ann Arbor News last November 9th, and contained two large photographs, one of Jim removing darts from a 3-D target and one action photo of Don Redfox from Ohio launching a dart. Nice going, Jim and all you other Michigan throwers. Keep us in the news!

DUHG

BY JASON ENOS



SCRATCHING HIS HEAD, DUHG DECIDES WHICH DART TO USE.

An Analytical View on the Strengths of Consuming Beer

Furnished to us by Dean Pritchard

A herd of buffalo can only move as fast as the slowest buffalo, and when the herd is hunted, it is the slowest and weakest ones at the back that are killed first. This natural selection is good for the herd as a whole, because the general speed and health of the whole keeps improving by the regular culling of the weakest members.

In much the same way, the human brain can operate only as fast as the slowest brain cells. Excessive intake of alcohol, we all know, kills off brain cells, but naturally it attacks the slowest and weakest ones first. In this way, regular consumption of beer eliminates the weaker cells constantly making the brain a faster and more efficient machine.

12-Year Old Takes Grand Championship

Casey Pebbles, a 12 -year old from Springfield, OR, won the 1999 Northeast Oregon Atlatl Challenge, Sep. 26

Old Tools - New Eyes

Although we don't normally advertise on these pages, I thought members might appreciate hearing about the new book on flintknapping written by nationally recognized knapper, Bob Patten. Brand new, this profusely illustrated, 160 page softback is available for \$13.95 plus \$3.00 shipping and handling from Stone Dagger Publications, P. O. Box 28018 #16, Lakewood, Colorado 80228. (Colorado residents must add \$0.60 sales tax.)

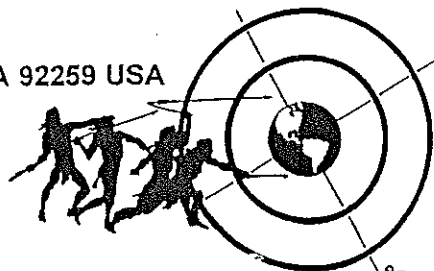
What the experts say:

Dr. James Dixon, Denver Museum of Natural History - "Old Tools - New Eyes is well written and illustrated, and essential reading for anyone interested in stone tools and archaeology. Bob shares his extensive knowledge in a concise, yet comprehensive overview of flintknapping."

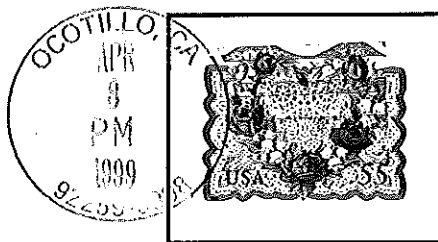
Charles Spear, former editor of the *Flintknapper Exchange* - "Well Done! This is one of those times I must say from the standpoint of design, use of illustrations, verbal information, photos, etc, it all comes together in a book which will go among my choice selections on flintknapping."

MEMBERSHIP IN THE WORLD ATLATL ASSOCIATION IS JUST \$10.00 PER YEAR, FAMILY: \$15.00. CANADIAN AND FOREIGN MEMBERSHIPS: \$12.00. SEND ALL INQUIRIES AND DUES TO WAA SECRETARY.

LENI CLUBB
P. O. BOX 56
OCOTILLO, CA 92259 USA



The WORLD ATLATL ASSOCIATION, Inc.



JOHN WHITTAKER
DEPT - ANTRHO, GRINNELL C
P.O. BOX 805
GRINNELL, IA 50112-0806

(9/99)

WORLD ATLATL ASSOCIATION WEB SITE: <http://users.aol.com/tbprim1/WAA.html>