

The ATLANTL

“Too long have I hunted mammoth alone!”

Rich McWhorter

January 1997

THE NEWSLETTER OF THE WORLD ATLANTL ASSOCIATION, INC.
1390 South Paris Court, Aurora, Colorado 80012, USA

Vol. 10, No. 1

BILL TATE, EDITOR
atlantl@mho.net

PASCAL CHAUVAUX BEST IN THE WORLD

by
Lloyd Pine

The International Standard Accuracy Contest (ISAC), now one year old, really points out who the top competitors are. I believe we can call this first year a complete success. The contest was offered 26 times with a total of 256 contestants. I expect that in 1997 the number of contests will be substantially higher, as we already have new groups scheduling the ISAC. There have been some minor changes to the rules for 1997, so contest organizers need to get a copy of the revised guidelines. These are available from Secretary Leni Clubb as of this printing.

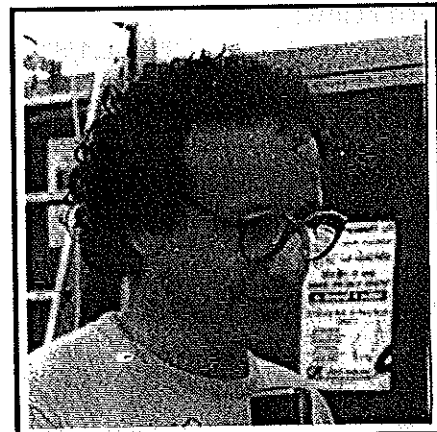
Those receiving “Top Ten” certificates are listed below.



Robert Hamilton demonstrating his skill in practice. Hamilton scored 82 for second best in for 1996.

Pascal Chauvaux, of Belgium, and Robert Hamilton from Utah, USA are the only throwers to score higher than 80 points in this exacting competition. Pascal scored in the 80s four times during the year. All of the top ten scores were 75 or higher, and five more people placed in the low 70s. Twenty-eight throwers scored 60 or higher and 44 made it into the 50s or better.

Scores in the ISAC climbed during the year and I expect that



Pascal Chauvaux, Cerfontaine, Belgium is the best spearthrower in the world for 1996 with a score of 87.

they will continue to advance in 1997. The number of ties shows just how tight the competition was at the top. I expect that scores will reach into the low 90s in 1997, and that the "X" hits will become a more significant tie-breaker.

The best way to join those with scores above 70 is to work to become so very consistent that you seldom throw a miss. For most of us this means good concentration and attention to good form. Take advantage of the greater number of contests for 1997, and enter as many as possible.

The Top Ten Certificates go to:

NAME	ADDRESS	SCORE
Pascal Chauvaux	Belgium	87
Robert Hamilton	Utah, USA	82
Steve Cabarax	Belgium	79-X
Alain Sellekaerts	Belgium	79-X
Martin Street	Gr. Britain	78
Ray Strischek	Ohio, USA	78
Ray Madden	Missouri, USA	77
Jean Speckens	Belgium	77
Barry Kimball	Colorado, USA	75-X
Patrick Bidart	France	75

Other throwers who scored 50 and higher are listed below:

Chuck Butorajac	Penna., USA	74
Jeff McGill	Utah, USA	72
Bernard Ginelli	France	70-X
Norm Blaker	Mich., USA	70
Alain Maxence	Belgium	70
Didier Cocchi	Belgium	69
Jim Gilligan	Mich., USA	69
Christopher Griggo	France	68-X
Charley Brown	Colorado, USA	68
Ulrich Stodiek	Germany	64
Robert Berg	New York, USA	64
Paul Gleckl	Penna., USA	63-2X
Jim Ray	Montana, USA	63
Johann Tinnes	Germany	63
Thierry Gillain	Belgium	62
Russell Richard	Wyoming, USA	62
Lucien Betbeder	France	60
Ken Gramstad	ND, USA	60
Victor Ahearne	Mich., USA	59
Lou Becker	Mich., USA	59
Sebastien Georges	Belgium	59
Troy Helmick	Montana, USA	59

Laurent Bernat	France	58
Paul Leininger	Montana, USA	58
Gerhard Kalden	Germany	57-X
Rodger Klindt	New York, USA	57-X
Gary Fogelman	Penna., USA	56-X
Jean Giannasi	France	56
Bob Perkins	Montana, USA	56
Pierre Cattelain	Belgium	55
Ron Mertz	Missouri, USA	55
Mark Lipps	Ohio, USA	53
Pierre Matheus	Belgium	53
Jean-Marc Bayet	Belgium	50-X

Note that the X indicates a bulls eye "center" and is used, when possible, as a tie-breaker. Congratulations to all of the above great throwers. Good luck for 1997.

NEW THROWER ARRIVES IN MICHIGAN

Kylie Scout Gilligan was born to Michigan atlatl promoter, Jim Gilligan and his wife on January 6th. Our very best to all of them.

LANGUAGE LESSON

In the language of the Aboriginal Gundungurra People of New South Wales, Australia, as translated by some of the few remaining speakers, a throwing stick or spear is called *boolang*, and a spearthrower is a *whamharha*.

FLAG DAY AT FREMONT INDIAN STATE PARK

Leni Clubb

The Fremont Indian State Park's annual atlatl contest is set for Saturday, June 14th this year. There is a plan afoot to hold another Dutch Oven Dinner, as was held last year, but Park Ranger, Pete Weimer would like "feedback," (no pun intended) on how many of you would like to have such a meal. Contact him (only him and no other ranger) at (801) 527-463, 1 if interested.

If you see someone without a smile,
give him one of yours.

Another snappy comment by that great orator, *Anonymous*.

ALDER ACRES ATLATL TOURNAMENT

Rodger Klindt, phone: (315) 639-6293, address: 25325 Route 180, Dexter, NY 13634, will be hosting this eastern contest at Lorraine, New York on July 19, 1997. They are planning on having two target events, plus the International Standard Accuracy Contest (ISAC).

As this will be his first such event, he would appreciate any help the membership can give him. Nearby WAA members are encouraged to make contact with him well before the meet.

ATLATL FOR THE CLASSROOM

by
Troy Helmick

Deanna Johnson coordinates a program for the Montana Historical Society in Helena that they call "Archaeology in the Classroom." A teaching trunk, filled with photos, a slide show, artifact replicas, a teacher's guide, and information about Montana Native American culture, prehistory, and archaeology is loaned to state schools.

I was asked by Mark Baumler, Montana State Archaeologist if we would assist in obtaining a replica atlatl to add to the contents of the trunk. I immediately contacted Montana's state Atlatl Champion, Jim Ray and without hesitation, Jim said, "I will make one for them."



Jim Ray, left, and WAA President Troy Helmick present atlatl and dart to Marcella Sherfy, Education Officer, Montana Historical Society.

Jim prepared a Basketmaker style throwing stick of all natural materials, bone spur,

native stone weight, and with finger loops and bindings of leather and rawhide. I then made a dart with a *red osier* mainshaft and foreshaft, turkey feather fletching, and an obsidian projectile point.

On Jan. 2nd, we met with Marcella Sherfy, Education Officer, Mark Baumler, and Deanna Johnson in Helena to present the items to them. (That's one small donation from atlatlists, but a giant leap back into prehistory for Montana).

The dart required some modification in the form of an "invisible" joint, made by Todd Saarinsen, Museum Preparator, before it would fit into the trunk. ...Todd may just have designed the world's first "switch blade atlatl dart."

BELGIANS MAKING EDUCATIONAL EXHIBIT TO SHOW AT EUROPEAN SPEAR THROWING COMPETITIONS

In a recent letter from Pascal Chauvaux, he indicated that he was very involved in making a spearthrowing exhibit to take to each of the scheduled 12 European contests. His plans call for pictures and text as well as replica spearthrowers to educate the public.

HOW ABOUT A PENNSYLVANIA ATLATL DEER HUNT?

Chuck Butorajac has been in touch with the Pennsylvania Game Commission concerning a possible 30-day experimental, atlatl deer hunting season (probably in conjunction with bow season) during the month of October 1997. There would be a \$50.00 hunting fee for this month long test.

Would you be willing to spend that much to participate? Do you have any ideas or experience dealing with such issues? If so, contact Chuck Butorajac, P.O. Box 533, Ligonier, PA 15658, or phone (412) 238-6878.

The ten most stressful events: Death of a spouse, Divorce, Marital separation, Time in jail, Death of a family member, Personal injury or illness, Marriage, Loss of employment, Marital reconciliation, and Retirement.

SOCIETY OF PRIMITIVE TECHNOLOGY

The Society of Primitive Technology (SPT) is an organization that promotes the practice and teaching of primitive skills, fosters communication between teachers and practitioners, and sets standards for authenticity, ethics, and quality. The SPT publishes a beautiful 96 page biannual publication called the *Bulletin of Primitive Technology*, which would be a great asset to WAA members, expanding their knowledge from atlatls into a variety of affiliated primitive skills. Topics that are addressed in each issue range from bows and arrows, rabbit sticks and flintknapping to useful plants, reconstruction projects and timely issues. To become a member and support a second innovative organization, send \$25 to SPT, P.O. Box 905, Rexburg, ID 83440, or call (208) 359-2400 and subscribe with VISA or MasterCard. Visit our Web Site at www.easystreet.johndamm.com or contact the managing editor, David Wescott at dwescot@aol.com. Check us out. If you enjoy being a part of the WAA, the SPT will be a great addition to your journey into the past.

ACKNOWLEDGMENT

On behalf of the Great Lakes Primitive Organization and its members, I would like to thank all of the World Atlatl Association members who made the long trip to Bois Blanc Island this past Fall. It was a great opportunity and a beautiful setting in which to meet you, throw darts, swap stories, and share information with so many great people from so far away. I would also like to let you know that preparations for the 1997 Bois Blanc Island event have begun. Anyone who is interested in learning and/or sharing their knowledge of primitive skills will be more than welcome to attend. More details will be made available in the near future.

Thanks,

Victor Ahearne, 13 Fox Hound Ct., Grand Blanc, MI 48439. (810) 603-2453.

RAMBLINGS

The following was excerpted from a recent letter sent to us by Chuck Butorajac. It is included here to start others thinking about these subjects. Some are questions, some are answers. If any of you want to include your thoughts on these subjects or any other atlatl-related matter, contact an officer, drop me a note, or better yet, attend the next meeting of the WAA in April.

Primitive is primitive and modern is modern. Artificial sinew and epoxy glue are not primitive material! It's like being almost pregnant--you either are or you are not. I think use of non-primitive materials is an insult to the person that puts out the extra effort to use all natural materials and follows our ancestors in the true spirit of the atlatl. If you cannot find your own feathers, bone, horn, hide glue, sinew and long natural shafts, they are obtainable at very modest cost.

Is a flintlock rifle still a primitive flintlock if you put a scope on it instead of iron sights? Should we have one open classification in atlatl contests, using whatever you want, and best man wins? Remember, "modern" equipment will only give you distance--not accuracy. Is natural material still primitive if it is worked with modern tools and technology? How many classifications of throwers should we have? (Men, Women, Under 16, Boys under 16, girls under 16, under 12, boys under 12, girls under 12, under 8, etc, etc?)

Distance throws are dangerous. Unless you throw for distance as part of your regular practice, with the excitement of the competition and the desire to "really put it out there," you are asking for serious and expensive physical damage to your body. I know--I spent four months nursing an "atlatl elbow" just trying to out-throw myself.

Because of the increasing number of participants, I propose that we give consideration to changing the accuracy contest to 2 consecutive throws each at 10,15,20,25, and 30 meters with modified (shorter) distances for women and the under 16 group.

I understand that at some contests, the cardboard target is suspended in a rack with no bails behind it to stop the spears! No thanks! I'm not going to destroy my best fletching.

The atlatl is not croquet. It is not golf. The atlatl is a hunting weapon--not a lawn sport. With that in mind, the target should be set up "in the woods," to simulate actual hunting conditions, just as the bow and arrow hunters do. Set targets at different ranges--use different targets--shoot uphill and down.

The future of the WAA is now. We should ask for and discuss different ideas and set the standards for the future. Take the time to put together questions and comments from all of the membership to vote on and see just where we stand on these and other issues.

HOW ABOUT A COMPETITION IN CALIFORNIA???

We received a telephone call from Frank Downs (209) 229-4550, of the Fresno California Field Archers about this very subject. Frank is new to

atlatling, but is an old time archer. His field archery group holds a huge (by WAA standards) event during the last week in April, called the North American Safari. Archers aim at a large array of 3-D foam targets, including an *elephant*. With 1200 to 4000 archers attending, this would be a wonderful group to which to introduce the atlatl. The event is held at Dunlop, about 40 miles east of Fresno, sort of midway between the two California population centers, and coincidentally the two major West Coast groups of atlatlists--these being in the vicinity of Los Angeles and San Francisco. Even our western Nevada members could easily take advantage of this should those members who live nearby wish to promote such an event. Although it may be too late this year to set up a real competition, those living near Fresno could at least attend and put on a demonstration. There is an entrance fee, but such things have never held back WAA members. By the way, California boasts 47 members--the largest group in any state.

MEMBERSHIPS BY STATE AND COUNTRY

AK	4	NH	1
AL	1	NJ	5
AZ	13	NM	5
CA	47	NV	3
CO	32	NY	17
FL	8	OH	9
GA	2	OK	2
IA	3	OR	5
ID	2	PA	9
IL	10	RI	1
IN	3	SC	1
KS	2	SD	1
KY	3	TN	4
LA	6	TX	14
MA	6	VT	10
MD	2	VA	3
ME	1	VT	1
MI	15	WA	5
MN	12	WI	12
MO	14	WV	4
MT	11	WY	11
NC	3		137

Canada: BC 2, ONT 2, SK 1
 Europe: Finland 1, France 1, England 1, Germany 2
 Belgium 2.

As of the date from which these figures were obtained, a few months old now, we have no members in HI, MS, AR, ND, NC, DE or CT. We are still growing, however, and becoming known the world over.

FIRST CONTEST OF 1997 - JAN 25,26

by

Pascal Chauvaux

Like last year, our French friend Jean-Francois Peres and his association, Les Amis de la Prehistorie, found a snowy site for our first European contest. We were the guests of a ski resort called Prapoutel/Les Sept Laux, at a elevation of 1500 m. Contestants began arriving on Friday night, some from as far away as Belgium--700 miles distant.

Saturday morning was devoted to registration and training. Lunchtime was again a great time of friendship, and at 2:00 p.m. the first bow contest of the dual (primitive bow and spearthrower) championship began. In the evening, a big fraternal meal brought throwers, organizers and ski resort staff together, before giving way to primitive skills activities: fire making demonstration with hand and bow drills, as well as flint and steel striker (a European speciality, with the oldest striker found, dating to 400 BC), flintknapping, making "prehistoric" glue, and a discussion about experimental archaeology.

The next day, three circuits of 10 targets, proportional to growing distances, were dispersed in a pine forest, and 26 atlatlists from France, Canada, and Belgium began their competition. At the end of the morning, Jean-Francois Peres of France had won the WAA trophy, followed by Laurent Bernat, France, and Alain Maxence of Belgium.

Following lunch, organizers graciously distributed about 20 books offered by Jerome Millon, editor in Grenoble, France. For the bravest of the group, a WAA International Standard Accuracy Contest was held in the afternoon, where Jean Speckens of Belgium scored 77 for top honors.

Official Results

REGULAR CONTEST (26 throwers)

1st	Jean-Francois Peres	France	19.30
2nd	Laurent Bernat	France	8.00
3rd	Alain Maxence	Belgium	7.51
4th	Jean Speckens	Belgium	5.78
5th	Christian Dujardin	Belgium	4.20
6th	Francois Boisseau	France	3.91
7th	Pascal Chauvaux	Belgium	3.40
8th	Pascal Wauthier	Belgium	3.27
9th	Georges Levy	France	3.00
10th	Alain Grospron	France	2.96

STANDARD ACCURACY, ISAC (9 throwers)

1st	Jean Speckens	Belgium	77
2nd	Pascal Chauvaux	Belgium	73
3rd	Jean-Francois Peres	France	63
4th	Emeric Cornet	France	34
5th	Aude Labarge	France	31
6th	Thierry Briolle	France	27
7th	Sandrine Ray	France	22
8th	Jeremie Liagre	France	14
9th	Dominique Cousyn	France	13

335
 1/2/97

on target

by
Leni Clubb



As we start a new year of atlatl activities, I want to remind contest organizers that The World Atlatl Association's Grand Champion brass award plates are available at no cost to groups planning contests during 1997. If you will drop me a note, I'll be happy to send you the requirements for obtaining the award.

If you are on the Internet, and want to contact other members by e-mail, a list of addresses is available.

We just received word from Louis Rebello that a group in Ontario Canada is planning to organize a Central Canada Atlatl Association. This is the first such group in Canada! See the atlatl event calendar in this issue for their first contest. It is their hope that WAA members from Michigan, New York, and Pennsylvania will join them.

Our President, Troy Helmick, writes that the Montana Legislature is again in session and he anticipates passage of a bill to allow hunting with an atlatl during some portion of the regular archery hunting season in that state. A similar bill was defeated a couple of years ago. Troy asks that if you have any information about hunting with the atlatl in other areas, please contact him at P.O. Box 303, Townsend, MT 59644, or telephone (406) 266-3398.

Your Board of Directors and Executive Officers are very interested in the future of our organization, and we value your input. We invite you to attend the Annual Meeting at the Valley of Fire State Park, Nevada on April 18th at 3:00 p.m. If you have any comments, ideas, suggestions for the betterment of WAA, please let us hear from YOU. (Ed. Note: See above comments under heading: RAMBLING.)

Don't forget to check your membership expiration date in the upper right corner of the mailing label.

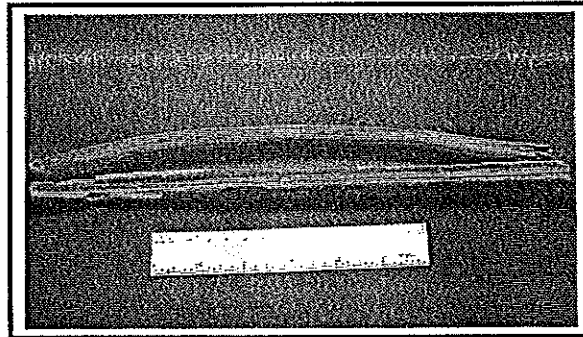
FRIENDS MAY COME AND GO, BUT
ENEMIES ACCUMULATE.

MEXICAN ATLATL FRAGMENT

by
Bill Tate

The Moss Rock Shop at 3461 S. Broadway, Englewood, Colorado is not the place one would expect to find atlatls. However, during a recent search for parts for a bolo tie led me to this place, and that is exactly what I found. The shop, run by knowledgeable and friendly Jack Sliemers, is filled with beautiful crystals, minerals, and fossils. Many are large, beautiful specimens, and would not be out of place in any museum. One thing led to another during our visit, and I ended up buying some catlinite as well as the jewelry parts I needed.

After the business was out of the way, the more enjoyable part of the visit occurred--swapping stories. Naturally I mentioned atlatls, and Jack said he had acquired one during the purchase of rock samples. It had been taken from a dry cave in the Torreon Desert in the vicinity of Torreon, Coahuila, Mexico.



Grooved portion of Mexican atlatl dated to 700-900 AD.

This grooved stick, 30.5 cm long does, in fact, appear to be a part of an atlatl shaft. It varies from 15 to 17 mm across and has a shallow 11 to 12 mm-wide groove. The second stick, 29.7 cm long and 14-16 mm in diameter, was found with the grooved portion and may indeed be a part of the atlatl. The wood appears similar, but I could not see that they had ever been connected. Both pieces are quite fragile and show polish and wear on their surfaces. A tag on the plastic bag holding the pieces stated that they date from A.D. 700-900.

Only in America could the slowest traffic of the day be referred to as "Rush Hour."

Last February, I joined the WAA and am thoroughly enjoying this interesting and unique organization.. Everyone seems to be so outgoing and helpful to a neophyte like me. I got Ron Mertz's video of the Valley of Fire Atlatl Contest, which I think is excellent. Since I have not been to a meet, I liked seeing the scenes of the park, the interviews with some of the participants and especially, the actual throwing which was very helpful to someone who has never used an atlatl! I intend to watch it over and over. I also found Jim Ray's booklet about atlatl construction and usage, and Ray Strischek's booklet about bamboo spears interesting. I am trying to make an atlatl, but I think making a spear is beyond me.

I look forward to the newsletter and all the information you manage to cram into it.
 Marilou Lynch,
 Kingsville, Texas

The sketch and wonderful photograph below were sent to us some time ago from Pascal Chauvaux. They show modern usage of the spearthrower off the Greenland coast.

From a Greenlandic tourist brochure



In northernmost Greenland, the narwhal is still hunted using the old methods. These miniature whales account for a large part of people's subsistence in the outlying areas of Greenland and are in no way endangered by extinction.

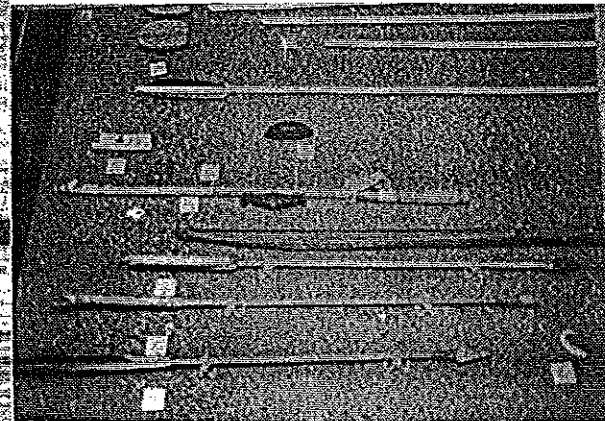


Somehow a Montana Historical Society press release submitted for inclusion on these pages didn't get to my attention in time for their 8th Annual Montana Mammoth Hunt last July. My sincere apology for that. It is probably my "file by pile" system of keeping track of things. In hopes that the same exhibit will be available for the 9th Annual Mammoth Hunt scheduled July 19th, again at the Blacktail Ranch, we offer excerpts from that news release. Ed.:

When you are in Helena for the Montana Mammoth Hunt, stop at the Montana Historical Society to see its exhibit on the early days of the sport. In its "Homeland" exhibit, the Society has a collection of replica atlatls and spears like those used thousands of years ago by the early hunters in this area. The Society's authentic Anzick Collection of stone points and tools will also put you in the mood to celebrate the truly historic sport of atlatling.



Anzick Clovis cache collection.



Atlatl construction display.

ATLATL EVENTS AROUND THE WORLD -- 1997

Make plans to "ride the circuit"

- Jan. 25,26 European Spearthrowing Championships, Prapoutel/les7 Laux (Isere, France)*
- Feb. 15 Third annual "Winter Count" Primitive Skills Conference atlatl contest, near Phoenix, Arizona. Conference dates are February 10-15. Contact Boulder Outdoor Survival School, (BOSS) (208) 359-2400.
- Apr. 16-20 Valley of Fire State Park -- WAA Atlatl Contest. VoFSP, Overton, Nevada. Contact Leni Clubb (619) 358-7835.
- Apr. 18 WAA Annual Meeting at Valley of Fire State Park, Nevada -- 3:00 p.m. Contact Leni Clubb (619) 358-7835.
- Apr. 26,27 European Spearthrowing Championships, Ramioul, Belgium.*
- May 3 Mich. Atlatl Association Tournament, Noon at Brighton Recreation Area, Brighton, MI, Contact Jim Gilligan (810) 231-2314
- May 3 Spring Fling in the Woods, Ligonier, PA, Contact Chuck Butorajac, (412) 238-6878.
- May 3 Fort Osage Primitive Weapons Contest (Atlatl and Primitive Bow) Ft. Osage, Missouri, contact Virgil Hayes (818) 646-2514
- May 18 European Spearthrowing Championships, Samara, Somme, France.*
- May 24 Mich. Atlatl Association Tournament, Wilder Creek Cons. Club in Marshall MI Contact Jim Gilligan (810) 231-2314.
- May 25 Mich. Atlatl Association European Style Tournament, Wilder Creek Cons. Club, Marshall, MI., Contact Jim Gilligan
- May 31 European Spearthrowing Championships, Crepy-en-Valois, Oise, France.*
- Jun. 14 Fremont Indian State Park, Sevier, Utah, Contact Pete Weimer (801) 527-4631.
- Jun. 14,15 European Spearthrowing Championships, Les Eyzies-de-Tayac, Dordogne, France.*
- Jun. 21,22 Atlatl World Open, Fort Caspar, Casper, Wyoming, Contact Rick young, (307) 235-8462.
- Jun. 28,29 European Spearthrowing Championships, Solutre, Saone et Loire, France.*
- Jul. 4-6 Colorado Archaeological Society Encampment, Trinidad State Recreation Facility, Contact Bill Tate, (303) 755-5591.
- Jul. 5,6 European Spearthrowing Championships, Le Grand-Pressigny, Indre et Loir, France.*
- Jul. 12 Aurora Spear Sling Fling Thing, Aurora, Colorado, (Aurora History Museum) Contact Bill Tate (303) 755-5591.
- Jul. 19 Ninth Annual Montana Mammoth Hunt, Sponsored in part by the Museum of the Rockies to be held at Blacktail Ranch, Montana. Contact Troy Helmick, (404) 266-3398.
- Jul. 19 Alder Acres Atlatl Tournament, Lorraine, New York, Contact Roger Klindt (315) 639-6293.
- Jul. 19,20 European Spearthrowing Championships, Gletterens, Switzerland.*
- Jul. 26,27 European Spearthrowing Championships, Beaune, Cote d'Or, France.*
- Jul. 26,27 Platte River Primitive Skills Rendezvous, Douglas, WY, Contact, Diane O'Meagher (307) 358-0155.
- Aug. 9,10 European Spearthrowing Championships, Tautavel, Pyrenees Orientales, France.*
- Aug. 9-11 Central Canadian Atlatl Association contest at Orillia, Ontario, Canada, Contact Louis Rebello (519) 745-5930.
- Aug. 20-24 Great Lakes Primitive Gathering on Bois Blanc Island, MI, Michigan Atlatl Tournament Fri. 22nd, and WAA Contest Sat. 23rd. Contact Jim Gilligan (810) 231-2314.
- Sep. 7 European Spearthrowing Championships, Oerlinghausen, Germany.*
- Sep. 20 10th Annual Rabbitstick Primitive Skills Conference atlatl contest. Rabbitstick dates are: Sep. 14-20, Rexburg, Idaho, contact BOSS (208)359-2400.
- Sep. 20 Pennsylvania State Atlatl Championship, Ligonier, PA, Contact Chuck Butorajac (412) 238-6878.
- Sep. 20 Chimney Point State Historical Site at Addison, VT. To be conducted in association with Vermont Archaeological Week. Contact: Audrey Porsche (802) 759-2412
- Sep. 27 Sixth Annual West Virginia State Atlatl Championships, 1:15 p.m., Lower Campus, Davis & Elkins College, Elkins, WV. Contact Mountain State Forest Festival (304) 636-182, or William Good, (304) 636-5003.
- Sep. Or Oct. Dan O'Laurie Museum, Moab, Utah. Very tentative at this time. First reported Oct. 96, but have heard nothing new

*Note, our contact for all European Spearthrowing Championship contests is Pascal Chauvaux, Rue Au dela de l'Eau, 3 B-5630, Cerfontaine, Belgium (Telephone: 32 60 34 68 58).

(Members are encouraged to submit dates of atlatl events for this calendar)

In our next issue, look for some philosophical comments by Ray Strickek on several issues, but mostly about atlatl darts and just why the Europeans seem to be beating the Americans in the ISAC. The April edition will also have a report on a very interesting Minnesota rock art site.

KEEP SUBMITTING YOUR REPORTS, CARTOONS, AND SUGGESTIONS TO US. YOUR EDITOR CAN NOW BE REACHED BY E-MAIL: atlatl@mho.net



**VALLEY OF FIRE STATE PARK
OVERTON, NEVADA
SEVENTH ANNUAL ATLATL CONTEST**
Conducted by the World Atlatl Association
April 16-20, 1997

Schedule of events:

- | | |
|----------------------|----------------------------------------------------------------------------------------------------------------------------------------------------------------------------------------------------------------------------------------------------------------------------------------------------------------------------------------------------------------------------------------------------------------------------------------------------------------------------------------------|
| Thursday, April 17th | Practice your atlatl skills. Visit Valley of Fire's spectacular wonders. Photograph the magnificent rock formations and view the ancient rock art. |
| Friday, April 18th | 3:00 p.m. The World Atlatl Association's Annual Meeting in Group Site #3, Beehive Camping Area. All members are invited and urged to attend. |
| Saturday, April 19th | 8:00 a.m. Contest Registration at Atlatl Rock Picnic Area parking lot.
10:00 a.m. Atlatl contest at Atlatl Rock, followed by Award Presentation by Valley of Fire State Park officials.
Afternoon: International Standard Accuracy Contest (ISAC) in Beehive Group Camping Area #3.
6:00 p.m. Dutch Oven Dinner, prepared and served by the "Dutch Oven Society of Las Vegas." Cost: Adults \$8.50, Children 12, and under \$5.50. <u>ADVANCE RESERVATIONS ARE REQUIRED.</u> |
| Sunday, April 20th | Drive home safely, or spend more time in the Beautiful Valley of Fire area on your own. |

Entry fee and camping for the four nights are waived by the Park for World Atlatl Association members only. Identify yourself as a WAA member at the entrance kiosk. To remain in the park, you must obtain a permit placard and display it on your windshield. See Leni Clubb or other WAA officer at Beehive Group Camping Site #3 for the permit.

Motel accommodations for non-campers are available in Overton, 19 miles away, or in Las Vegas, 55 miles distant.

Contest and safety rules will be available at the time of registration, or contact WAA Secretary for advance copy. See address below. **NOTE: SAFETY RULES ARE STRICTLY ENFORCED.** Contest categories are: Men, Women, Youth 16 and under, and Kids under 10. A Grand Champion Award will be presented by WAA in both Primitive and Modern equipment categories.

=====

VALLEY OF FIRE ATLATL CONTEST AND DUTCH OVEN DINNER
IMPORTANT ---- PRE-REGISTRATION FORM ---- IMPORTANT

_____		_____	
(name)		(Phone)	

(Address)			

Contest category: _____			
(Camping?)	(Men)	(Women)	(Youth, >16) (Kids, >10)
DUTCH OVEN DINNER RESERVATIONS:			
ENTREE PREFERENCE: _____			
(No. Of Adults)	(No. Of children)	(BB Beef Ribs)	(BB Chicken)

Mail completed registration form to WAA Secretary, Leni Clubb, P. O. Box 56, Ocotillo, CA 92259 Before April 1, 1997. For further information call Leni at (619) 358-7835.

NEW VIDEO AVAILABLE

Welcome Back to the Stone Age: Beginning and Intermediate Flintknapping with Woody Blackwell. We have not examined the film, but judging from the advertisement it covers the following aspects of flintknapping: History, Safety, Percussion, Pressure, Platforming, Notching, Thinning, Fluting, Materials, Sawn slabs, Problem solving, and Sources. WAA members might be interested in viewing this two hour video available from Woody Blackwell, 1605 North Stafford St., Arlington, VA 22207. It sells for \$25.00 plus \$3.00 shipping.

ALL THINGS BEING EQUAL,
FAT PEOPLE USE MORE SOAP.

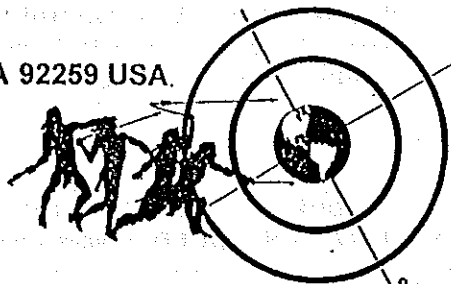
WYOMING RENDEZVOUS

Another Wyoming educational event is to include an atlatl demonstration and competition along with bow and arrow, and the usual primitive skills exhibits. It came to our attention just as we were putting this issue to bed. The second annual Platte River Primitive Skills Rendezvous is to be held at the State Fair Grounds in Douglas, Wyoming on July 26 and 27th. Co-hosted by the Pioneer Memorial Museum and assisted with funds from the Wyoming Tourism Board, this event promises to be a great learning experience. Several of our WAA members are already assisting with the event. Others living nearby might want to contact Diane O'Meagher at 803 Poison Lake Road, Douglas, WY 82633 to offer a hand.

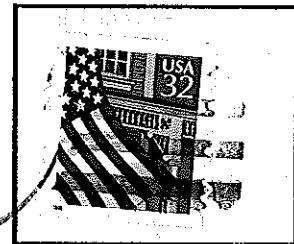


MEMBERSHIP IN THE WORLD ATLATL ASSOCIATION IS JUST \$10.00 PER YEAR, FAMILY: \$15.00. CANADIAN AND FOREIGN MEMBERSHIPS: \$12.00. SEND ALL INQUIRIES AND DUES TO WAA SECRETARY.

LENI CLUBB
P. O. BOX 56
OCOTILLO, CA 92259 USA.



The WORLD ATLATL ASSOCIATION, Inc.



JOHN WHITTAKER (9/97)
10960 E Redbud Rd
Flagstaff, AZ 86004

WORLD ATLATL ASSOCIATION WEB SITE: <http://users.aol.com/tbprim1/WAA.html>