

The ATLATL

SUMMER, 1988

VOL. 1 No. 1

THE NEWSLETTER OF THE WORLD ATLATL ASSOCIATION, INC.
1191 NUCLA STREET, AURORA, COLORADO 80011, USA

MEMBERSHIP

Membership in the WORLD ATLATL ASSOCIATION shall be open to all individuals, groups of individuals, organizations, institutions, and businesses who are in sympathy with the purposes of the association and agree to reasonable rules and regulations as adopted by the members and Board of Directors.

Active membership shall be given to anyone who has completed an application of membership, paid the regular annual dues, and been approved by the secretary as to good standing and sportsmanship.

In the interests of the association, the Board of Directors may suspend or cancel any membership for just cause.

***** PURPOSE

The purpose of the WORLD ATLATL ASSOCIATION shall be to:

A. Encourage the use, practice, competition, promotion, manufacture, and perpetuation of the atlatl spear thrower as an ancient hunting weapon and modern sporting device.

B. To bring together, those persons interested in the atlatl.

C. To cooperate with conservation, preservation, anthropological, and archaeological organizations to discover, record, and preserve any material and information that establishes or illustrates the presence of the atlatl.

D. To provide for the maintenance and preservation of archaeological and anthropological materials and information relating to the atlatl and for making such material and information available for study.

E. To maintain the records, rules, and standards of good sportsmanship for contests using the atlatl.

The above is extracted from the Constitution of the WORLD ATLATL ASSOCIATION.

TELL A FRIEND ABOUT THE WORLD
ATLATL ASSOCIATION, INC.

1988 ATLATL WORLD

OPEN

August 13, 1988

A hundred spectators held onto their hats as wind whipped across the grassy plot at Fort Caspar, Wyoming. They watched a small, but enthusiastic group of spear chuckers aim at life size buffalo targets to determine just who was the Grand Champion for 1988 at the Atlatl World Open. This was the seventh such contest, having been interrupted with no event for the past two years. Previously held in Saratoga, Wyoming, Casper, may now become the permanent home for this annual meet.

The morning hours were filled with demonstrations of flint knapping by a number of visiting knappers while atlatl contestants practiced on the atlatl court.

The winds continued to whip the area throughout the afternoon's contest testing the skill of the participants. When it was all over, Brian James of Olympia, Washington took the Grand Championship, beating out the top finishers in each of the three major divisions: Men's, Women's, and the under 16 Junior category.

The featured event of the evening was an excellent lecture by Dr. Dennis Stanford, Curator of Paleoindian Studies, Smithsonian Institution in Washington D. C. Dr. Stanford discussed recent archaeological investigations of the first Americans.

STANDINGS

GRAND CHAMPIONSHIP

- 1st - Brian James, Wash.
- 2nd - Bob Perkins, Mont.
- 3rd - Paul Leininger, Mont.

MEN'S DIVISION

- 1st - Bob Perkins, Mont.
- 2nd - Brian James, Wash.
- 3rd - Paul Leininger, Mont.

WOMEN'S DIVISION

- 1st - Leni Clubb, Calif.
- 2nd - Nora Van Burgh, Wyo.
- 3rd - Shirley Young, Mo.

JUNIOR DIVISION

- 1st - Scott Laird, Wyo.
- 2nd - Dustin Hills, Wyo.

TEAM DIVISION - ONE MEMBER UNDER 16, THE OTHER ADULT.

- 1st - Rod & Scott Laird, Saratoga, Wyo.
- 2nd - Bob Perkins, Manhattan, Mont., and Shane Roberts, Casper, Wyo.
- 3rd - Brian James, Olympia, Wash., and Dustin Hills, Casper, Wyo.

Prizes were also given for:

MOST AUTHENTIC ATLATL
Leni Clubb, Calif.

MOST ARTISTIC ATLATL
Bob Perkins, Mont.

MOST UNUSUAL ATLATL
Red Gramstad, Calif.



WINNERS OF THE 7TH ANNUAL ATLATL WORLD OPEN
AUGUST 13, 1988

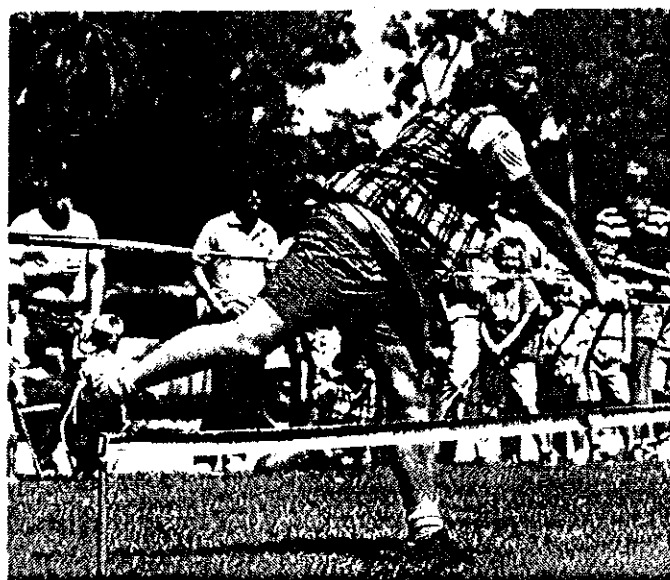
STANDING: SHIRLEY YOUNG, PAUL LEININGER, BOB PERKINS, ROD LAIRD, BRIAN JAMES, SCOTT LAIRD.
SEATED: NORA VAN BURG, SHANE ROBERTS, LENI CLUBB, AND DUSTIN HILLS.



THE TROPHIES



BRIAN JAMES, GRAND CHAMPION



- BOB PERKINS, WINNER OF THE MENS DIVISION
SHOWS HIS WINNING TECHNIQUE.

COLORADO ARCHAEOLOGICAL
SOCIETY 1988 ATLATL THROW
COMPETITION

Fifty-two contestants competed for the CAS Greatest Honor award over the July 4th, Third Annual Encampment held at the Pike Community Campground, Pike national Forest in Teller County, Colorado.

Ken "Red" Gramstad, an unaffiliated CAS member from Ocotillo, California, took the top prize--The CAS Greatest Honor. This traveling trophy can only be won by a CAS member, and must be returned the following year.

In the men's division, first, second, and third place winners were decided only after a three way play off.

ADULT MEN

- 1ST Paul Leininger (Mont.)
- 2ND Ken Gramstad (Calif.)
- 3RD Tim Boucher (Colo.)

ADULT WOMEN

- 1ST Heidi Leadabrand (Colo.)
- 2ND Mary Nelson (Colo.)
- 3RD Jeanne Crouch (Colo.)

16 AND UNDER

- 1ST scott laird (Wyo.)
- 2ND Gabe Cosyleon (Colo.)
- 3RD Jay Owens (Colo.)

10 AND UNDER

- 1ST Ken Herrman (Colo.)
- 2ND Dawn Moyer (Colo.)
- 3RD Eve Cosyleon (Colo.)

ADVERTISEMENT

10% DISCOUNT

WAA members receive 10% discount on their purchases from the following firms manufacturing atlatls and related equipment:

BPS Engineering, Box 797,
Manhattan, Montana 59741, phone
(406) 284-3307.

BPS Engineering is the maker of the "Mammoth Hunter" and other fine atlatls and darts. Call or write them for more detailed information.

Tate Enterprises Unlimited,
Inc., P. O. Box 110755, Aurora,
CO 80011, phone (303) 364-0059.
Contact Tate Enterprises for information on their "Spear Chucker" kits and readymade equipment.

DISCOVERIES
AT THE
JURGENS SITE

In the late 1960s, excavations were carried out at the Jurgens site in northeastern Colorado. This kill and butchering location along the south Platte River near the town of Greeley, was excavated by Dr. Joe Ben Wheat with Dr. H. M Wormington. In the midst of the 8-9000 year old artifacts recovered from among the skeletal remains of several dozen bison, was an unmistakable spur shaped fragment of deer antler--the hook of an atlatl. Additionally, four altered bison molars were recovered which are believed to have also been atlatl hooks. (personal communication, H. M. Wormington.)

ATLATL QUIVER

Atlatl enthusiast, Dan Ryan of North Palm Beach, Florida, sends us plans for his ATLATL QUIVER which he sets up when target shooting. Made of angle iron and a coffee can, it holds your extra spears until you are ready to shoot. No need to bend over and pick each one up or have a friend be your caddie.

Materials Needed

3/4 inch angle iron:

1 40 inch length

1 6 inch length

1 7 inch length

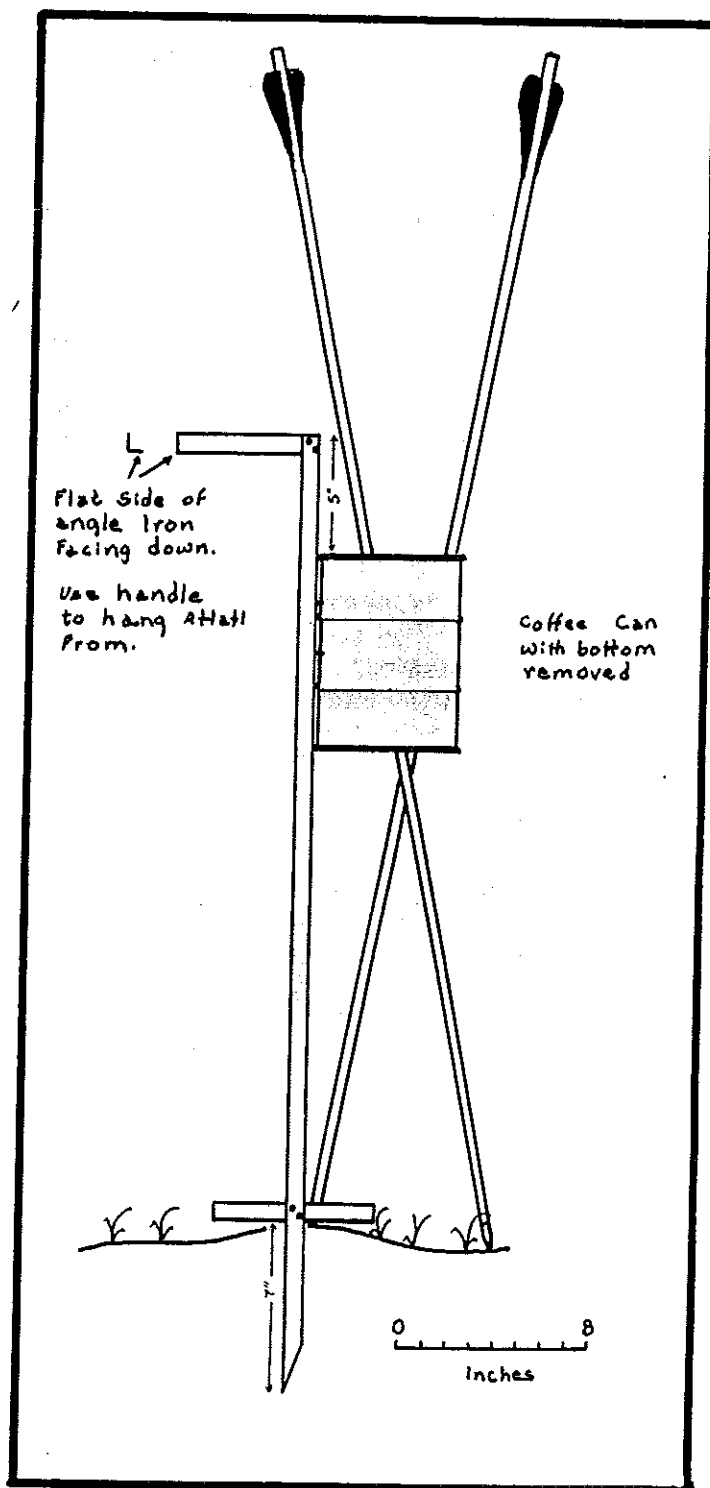
1 2 lb. coffee can.

6 small bolts and nuts.

Cut the bottom end of the 40 inch length diagonally to make a point. This will be inserted into the ground so it must be reasonably sharp. Drill and bolt the short pieces of angle iron securely to the 40 inch length using two bolts to attach each piece. (Greater strength may be had by having the pieces welded instead of bolted together) Keep the flat side of the six inch length of angle iron down so that the thin, sharper edge faces up to take the hook of an atlatl. This then, becomes a rack from which to hang extra atlatls.

Cut the bottom from the coffee can and drill two holes to fit holes drilled into the 40 inch length of angle iron. Bolt it in place, and paint.

By pushing the pointed end into the ground, the coffee can securely, but loosely holds quite a number of darts.



ATLATL ROCK PETROGLYPHS

ATLATL ROCK is located in the Valley of Fire State Park, northeast of Las Vegas, Nevada, on State Highway #40. It is described in the State Park brochure as: "2. Atlatl Rock: Site of many Indian petroglyphs including depictions of the atlatl ("at-lat-l"), a notched stick used to add speed to a thrown spear. The atlatl was a predecessor of the bow and arrow."

Incidentally, the Nahuatl pronunciation was more like ah-TLAHTL. The Uto-Aztecan language usually has the accent on the last complete spoken syllable.

MORE COMPETITION

WAA member, Bob Perkins attended the Solstice Competition for the atlatl, June 25, 1988 held on the Dave Schwab ranch near Helena, Montana. Bob says that an atlatl contest was recently included with other events at Lisbon, Ohio. We would like to hear more about these meets and others which may be cropping up across the country.

QUOTE FROM: "THE STONE AGE HUNTERS" BY GRAHAME CLARK - PAGE 96.

THE METHOD OF THROWING A SPEAR USING A SPEAR-THROWER HAS NOT CHANGED BASICALLY AMONG PRIMITIVE PEOPLES SINCE SPEAR-THROWERS WERE INTRODUCED IN MAGDALENIAN TIMES.

YOUR INPUT

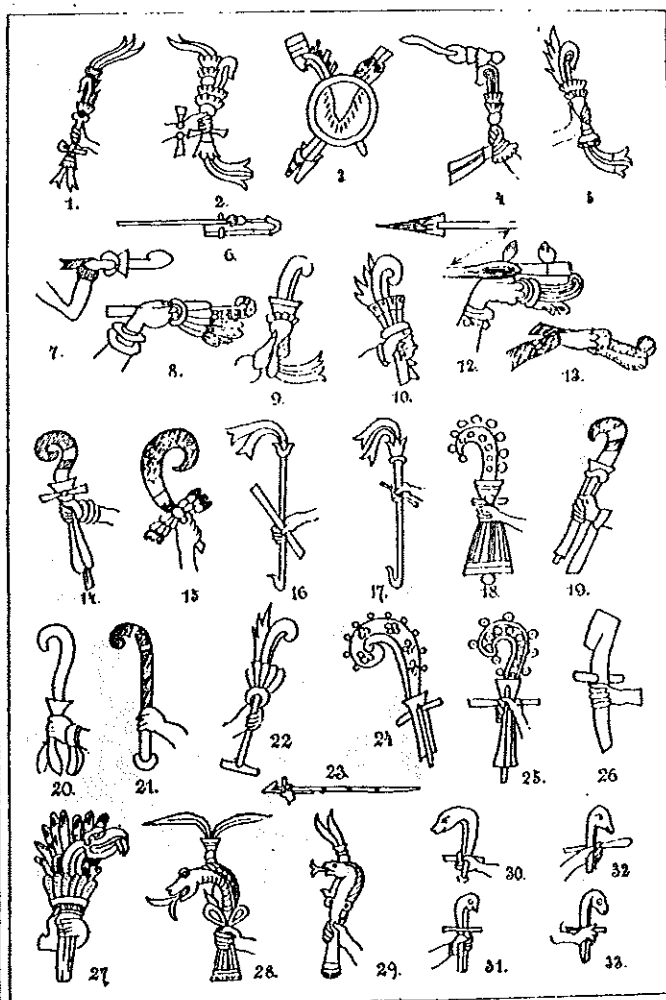
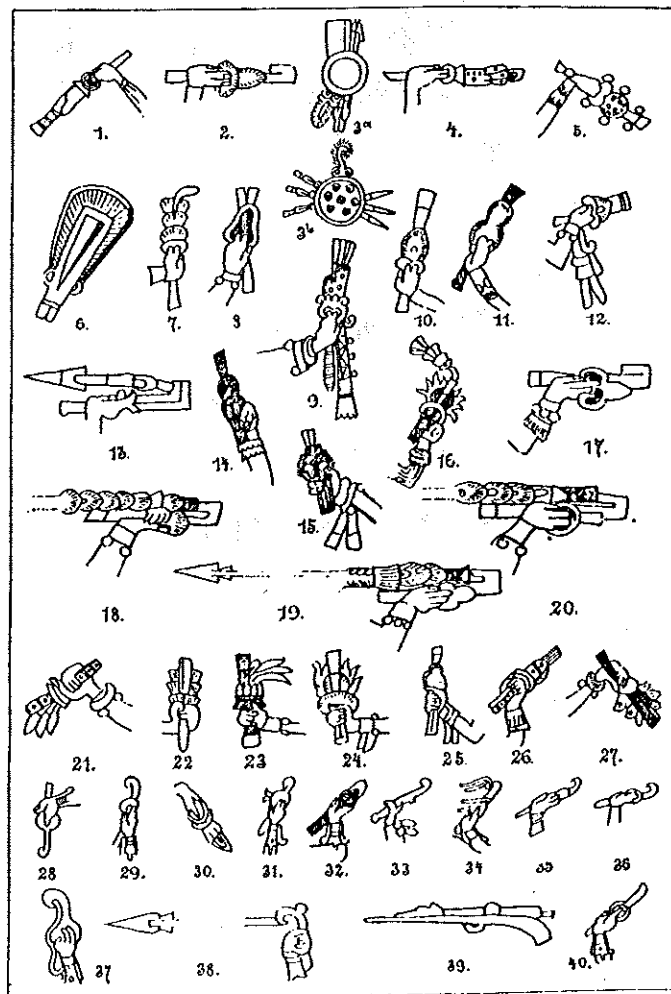
WE WOULD LIKE TO GATHER ALL SIGNIFICANT INFORMATION ABOUT THE ATLATL FOR OUR NEWSLETTER, THE ATLATL. SEND YOUR NOTES, LOCATIONS OF MEETS, STORIES, EVENTS, CLIPPINGS, SITE REPORTS, BIBLIOGRAPHIES, AND CARTOONS RELATING THE ATLATL TO THIS NEWSLETTER SO ALL WAA MEMBERS MAY HEAR ABOUT IT. PLEASE ADDRESS CORRESPONDENCE TO: THE ATLATL, 8800 STATE HIGHWAY 133, CARBONDALE, CO 81623.



THE PLATE ABOVE, AND THE TWO ON THE FOLLOWING PAGE ARE REPRINTED FROM:

CONT'D

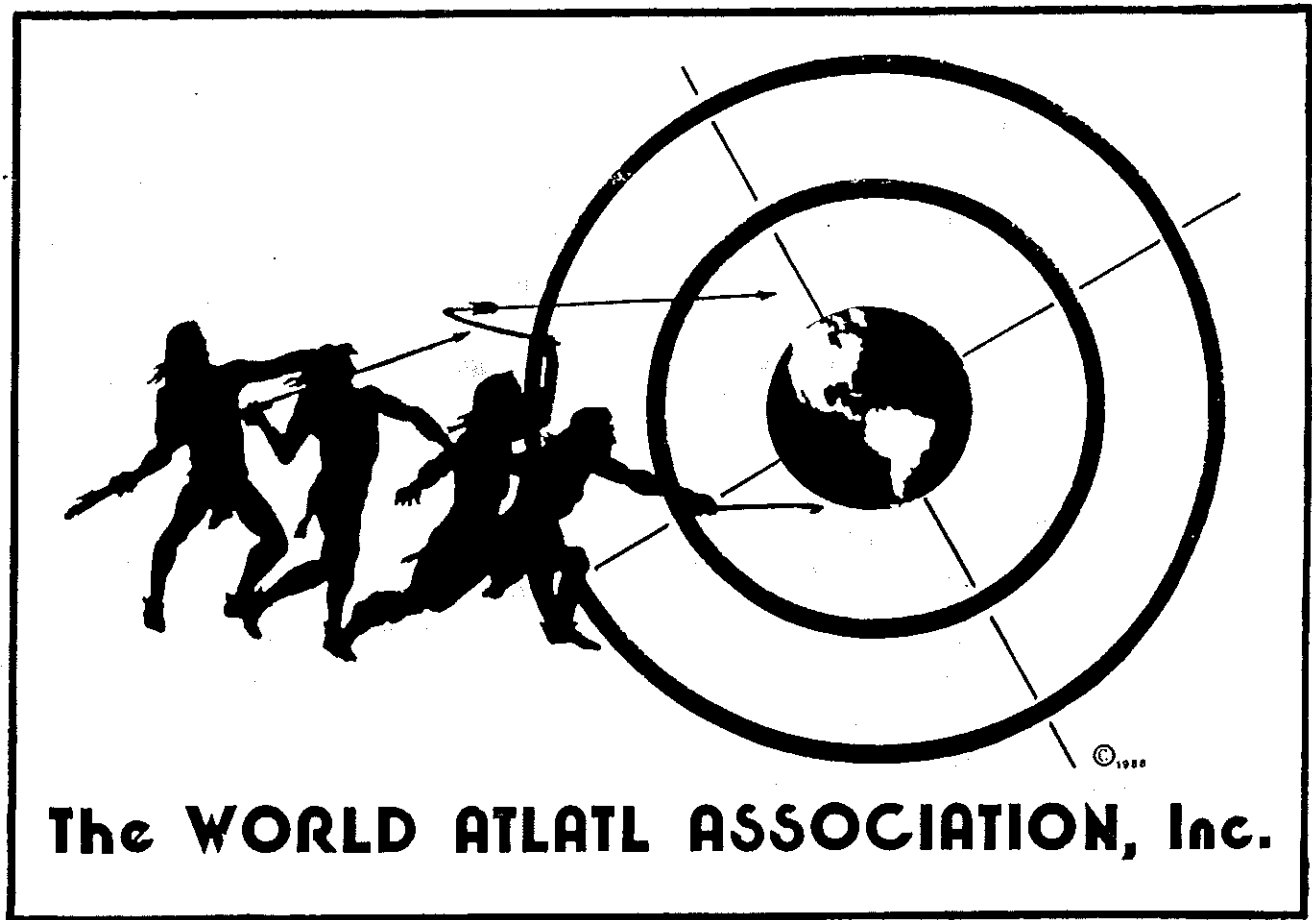
(CONT'D FROM PREVIOUS PAGE)
 "THE ATLATL OR SPEAR-THROWER OF THE
 ANCIENT MEXICANS", ARCHAEOLOGICAL
 AND ETHNOLOGICAL PAPERS OF THE
 PEABODY MUSEUM, HARVERD UNIVERSITY,
 VOL. I, No. 3., 1891.



AZTEC ATLATLS

THE WAA LOGO

At the first board meeting of the World Atlatl Association, Inc., a logo was selected. It was taken in part from the Third Annual Colorado Archaeological Society Encampment's logo. The original, and this altered version were designed by Bill Tate, WAA President. It depicts the ancient atlatl thrower against a modern target with the world as the bulls eye.



The WORLD ATLATL ASSOCIATION, Inc.

OFFICERS OF THE WORLD ATLATL ASSOCIATION, INC.

President, Bill Tate, 1191 Nucla St., Aurora, CO 80011
Vice President, Leni Clubb, P. O. Box 56, Ocotillo, CA 92259-0056
Secretary-Treasurer, Charles Lilly, 8800 State Hwy. 133,
Carbondale, CO 81623

BOARD OF DIRECTORS

Tim Boucher, P. O. Box 2508, Dillon, CO 80435
Doug Bowman, 1915 West 3rd Street, Durango, CO 81301
Scott Leslie, 188 Paseo Drive, Carbondale, CO 81623
Barbara Snobble, 5980 County Road 109, Carbondale, CO 81623